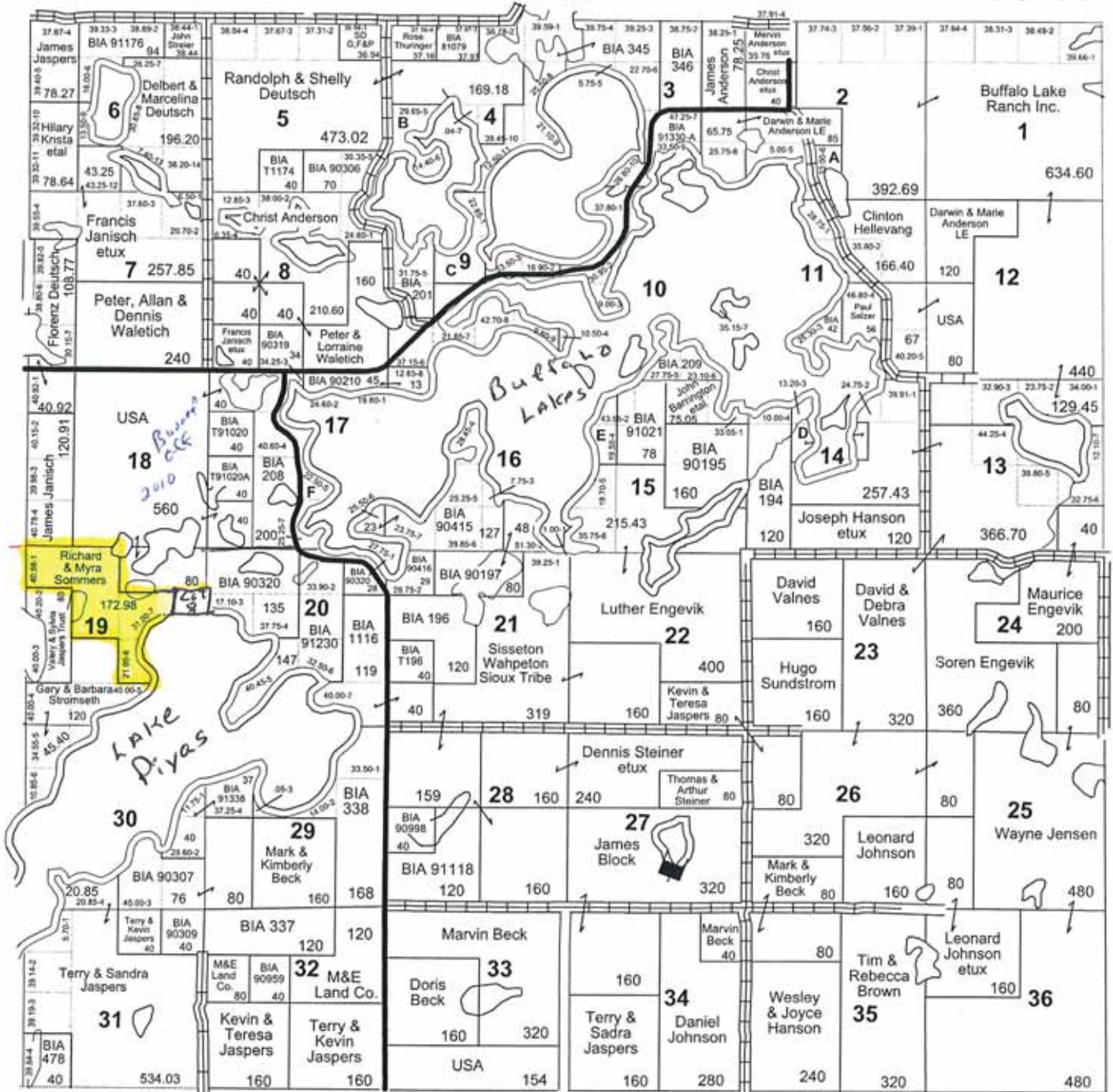


# BUFFALO TWP.

T 125 N

Land Owner

R 53 W



- Section 2 A Clinton Hellevang - 22.76
- Section 4 B Mabel Almos - 26.88
- Section 9 C Randy Almos et al - 30.50
- Section 14 D SD Game, Fish & Parks - 60
- Section 15 E BIA 339 - 25
- Section 17 F SD Game, Fish & Parks - 47.75

## DANA J. FROHLING

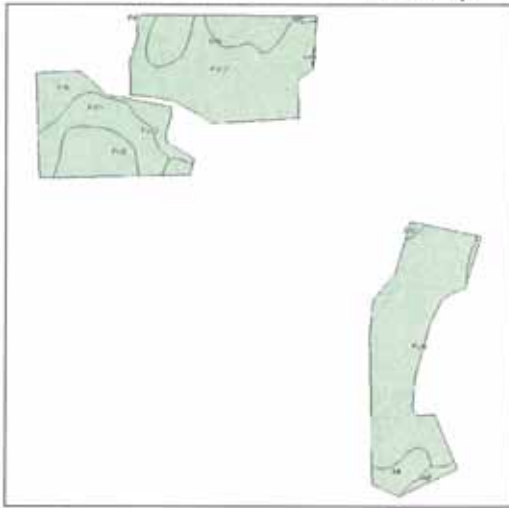
724 MAIN STREET  
PO BOX 919  
BRITTON, SD 57430

ATTORNEY AT LAW

BUS. (605) 448-2273  
FAX (605) 448-2275  
RES. (605) 448-5532



Soils Map



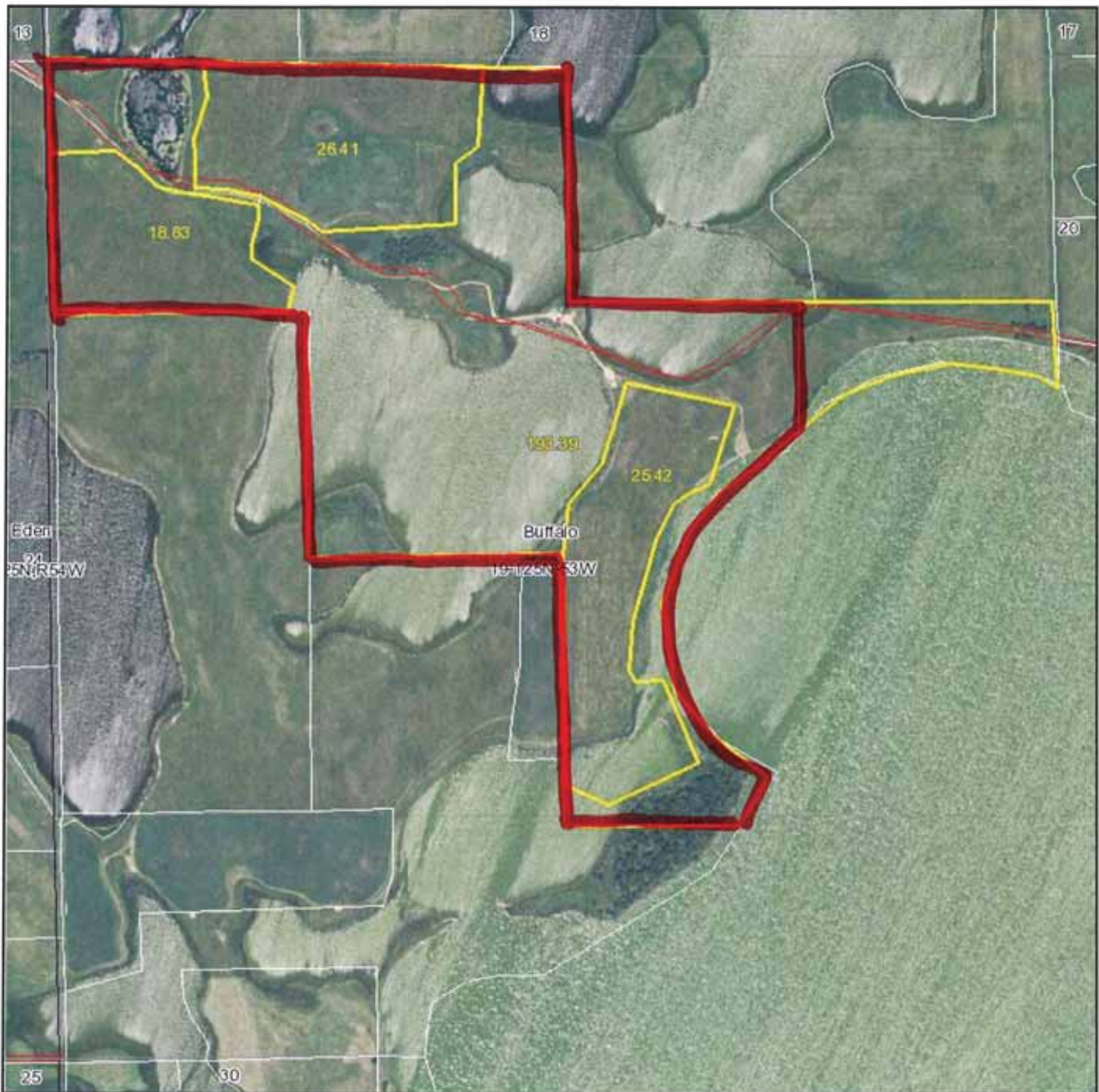
State: **South Dakota**  
 County: **Marshall**  
 Location: **019-125N-053W**  
 Township: **Buffalo**  
 Acres: **70.7**  
 Date: **4/26/2010**



Fsa borders provided by the Farm Service Agency as of May 23, 2008.  
 Soils data provided by USDA and NRCS.

Code	Soil Description	Acres	Percent of field	Non-Irr Class	Productivity Index	Alfalfa hay	Barley	Brome grass hay	Brome grass alfalfa	Corn	Corn silage	Grain sorghum	Oats	Soybeans	Spring wheat	Sunflowers	Winter wheat
PoB	Poinsett-Forman complex, 2 to 6 percent slopes	27.7	39.2%	Ile	84	2.5	52	2.2	2.6	69	7.3	40	65	26	36	1320	39
FsC2	Forman-Buse loams, 6 to 9 percent slopes, eroded	21.8	30.9%	Illc	61	2	40	1.8	2.1	49	5.2	29	49	18	27	940	30
FrB	Forman-Aastad loams, 2 to 6 percent slopes	10	14.1%	Ile	81	2.5	51	2.2	2.6	67	7.1	39	63	26	35	1260	38
FxD	Forman-Poinsett complex, 9 to 15 percent slopes	7.3	10.3%	IVe	50	1.9	36	1.8	2	43	4.5	25	44	16	25	820	27
Mr	Southam silty clay loam	2.3	3.3%	VIIIw	5		1	0.1	0.1	4	0.4	3	1	1	1	80	
AsE	Arvilla-Sioux loams, 9 to 25 percent slopes	0.8	1.1%	VIs	8	0.6	5	0.6	0.6	2	0.2	2	5	1	3	80	4
FrD	Forman-Aastad loams, 9 to 15 percent slopes	0.6	0.8%	Illc	53	2.1	39	1.9	2.2	49	5.1	28	49	19	27	930	29
RIC	Renshaw-Fordville loams, 6 to 9 percent slopes	0.2	0.3%	IVe	31	1.3	23	1.2	1.4	19	2	12	27	7	15	390	18
<b>Weighted Average</b>					<b>69.1</b>	<b>2.2</b>	<b>44.1</b>	<b>1.9</b>	<b>2.3</b>	<b>66.7</b>	<b>6</b>	<b>33.1</b>	<b>54.6</b>	<b>21.3</b>	<b>30.3</b>	<b>1085</b>	<b>33</b>

### Aerial Map



map center: 45° 35' 43.31, 97° 20' 27.77  
 scale: 10029

**19-125N-53W**  
**Marshall County**  
**South Dakota**



4/26/2010

Maps provided by:



©AgriData, Inc. 2010  
 www.AgriDataInc.com

Field borders provided by Farm Service Agency as of 5/23/2008. Aerial photography provided by Aerial Photography Field Office.