

# Aerial Map



Maps provided by:



©AgriData, Inc. 2009

www.AgriDataInc.com

**8-130N-92W**  
**Adams County**  
**North Dakota**

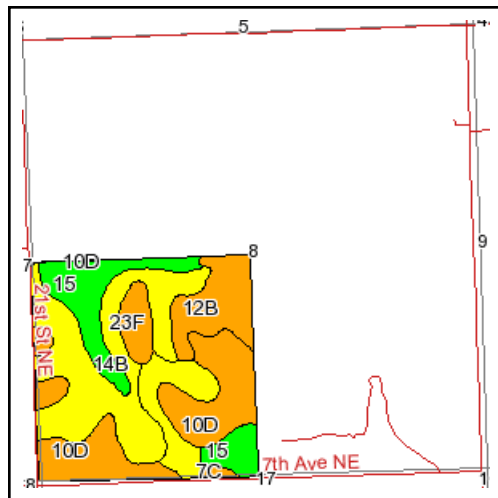
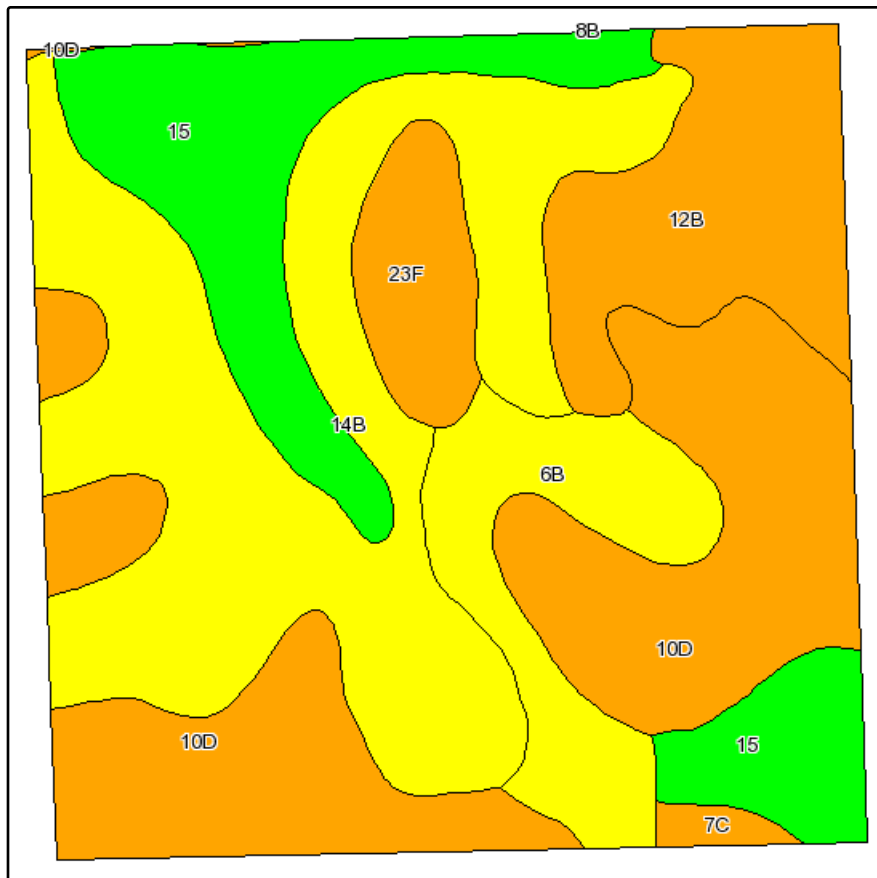
map center: 46° 5' 35.96, 102° 13' 19.03

scale: 6799



7/21/2009

# Soils Map



State: **North Dakota**  
 County: **Adams**  
 Location: **008-130N-092W**  
 Township: **East Adams**  
 Acres: **156.2**



Maps provided by:

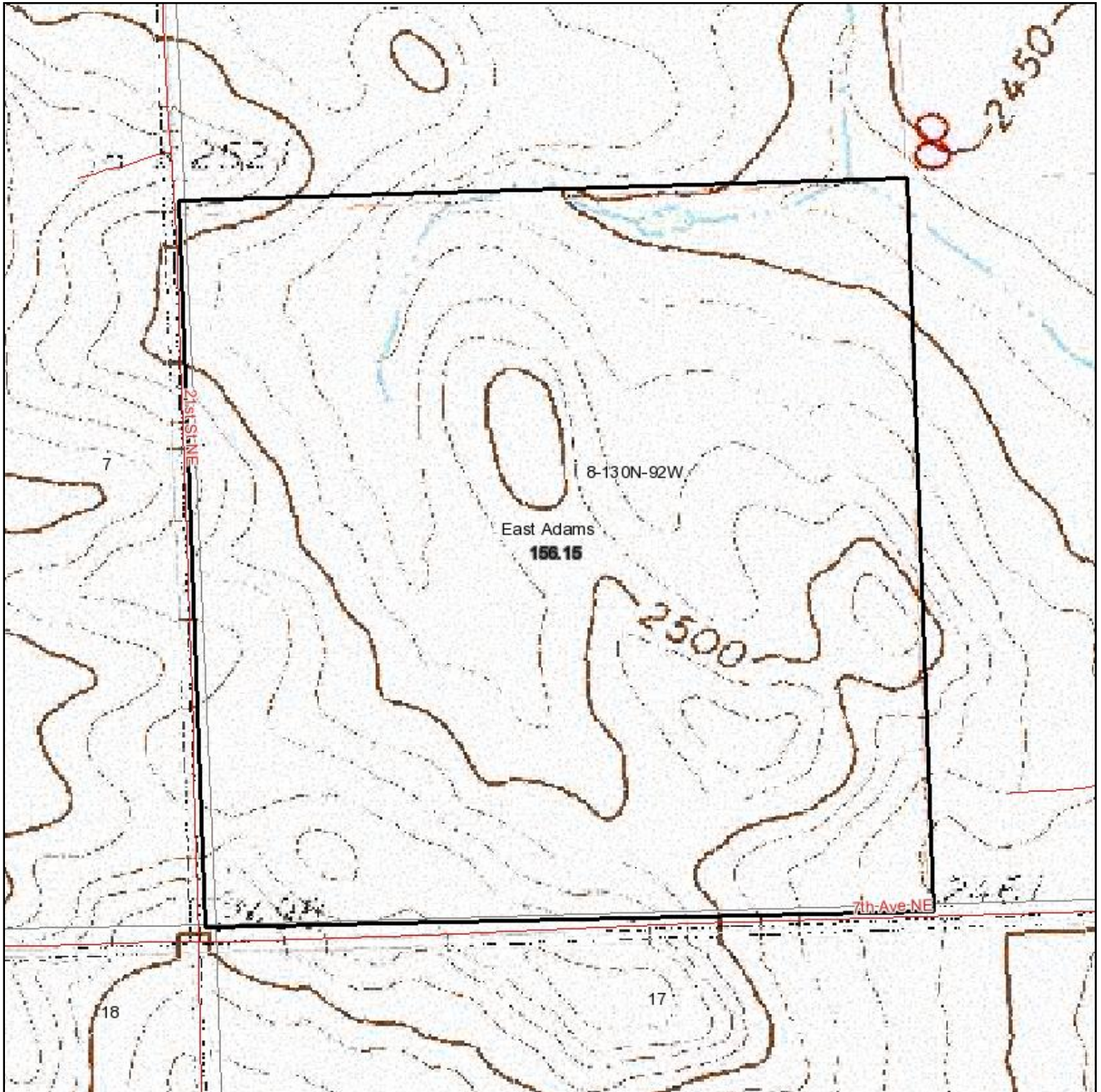


©AgriData, Inc 2008  
 www.AgriDataInc.com

Fsa borders provided by the Farm Service Agency as of May 23, 2008.  
 Soils data provided by USDA and NRCS.

Code	Soil Description	PI Legend	Acres	Percent of field	Non-Irr Class	Productivity Index
14B	Parshall fine sandy loam, 0 to 6 percent slopes		49.1	31.5%	IIIe	71
10D	Beisigl-Flasher loamy fine sands, 6 to 20 percent slopes		41.7	26.7%	VIe	28
15	Arnegard loam, 0 to 2 percent slopes		25.4	16.2%	IIc	93
12B	Daglum-Rhoades loams, 0 to 6 percent slopes		18	11.5%	Vs	39
6B	Vebar-Parshall fine sandy loams, 0 to 6 percent slopes		13.9	8.9%	IIIe	62
23F	Flasher-Beisigl-Rock outcrop complex, 6 to 70 percent slopes		6.9	4.4%	VIIIs	11
7C	Vebar-Flasher fine sandy loams, 3 to 9 percent slopes		1.2	0.7%	Ve	44
<b>Weighted Average</b>						<b>55.7</b>

# Topography Map



map center: 46° 5' 35.96, 102° 13' 19.03

scale: 6799

**8-130N-92W**  
**Adams County**  
**North Dakota**



7/21/2009



Maps provided by:



©AgriData, Inc. 2009

www.AgriDataInc.com

Field borders provided by Farm Service Agency as of 5/23/2008. Aerial photography provided by Aerial Photography Field Office.