

# Aerial Map



map center: 43° 28' 51.88, 100° 2' 48.93

scale: 21593

**14-100N-78W**  
**Tripp County**  
**South Dakota**



3/3/2009

Maps provided by:



©AgriData, Inc. 2009

www.AgriDataInc.com

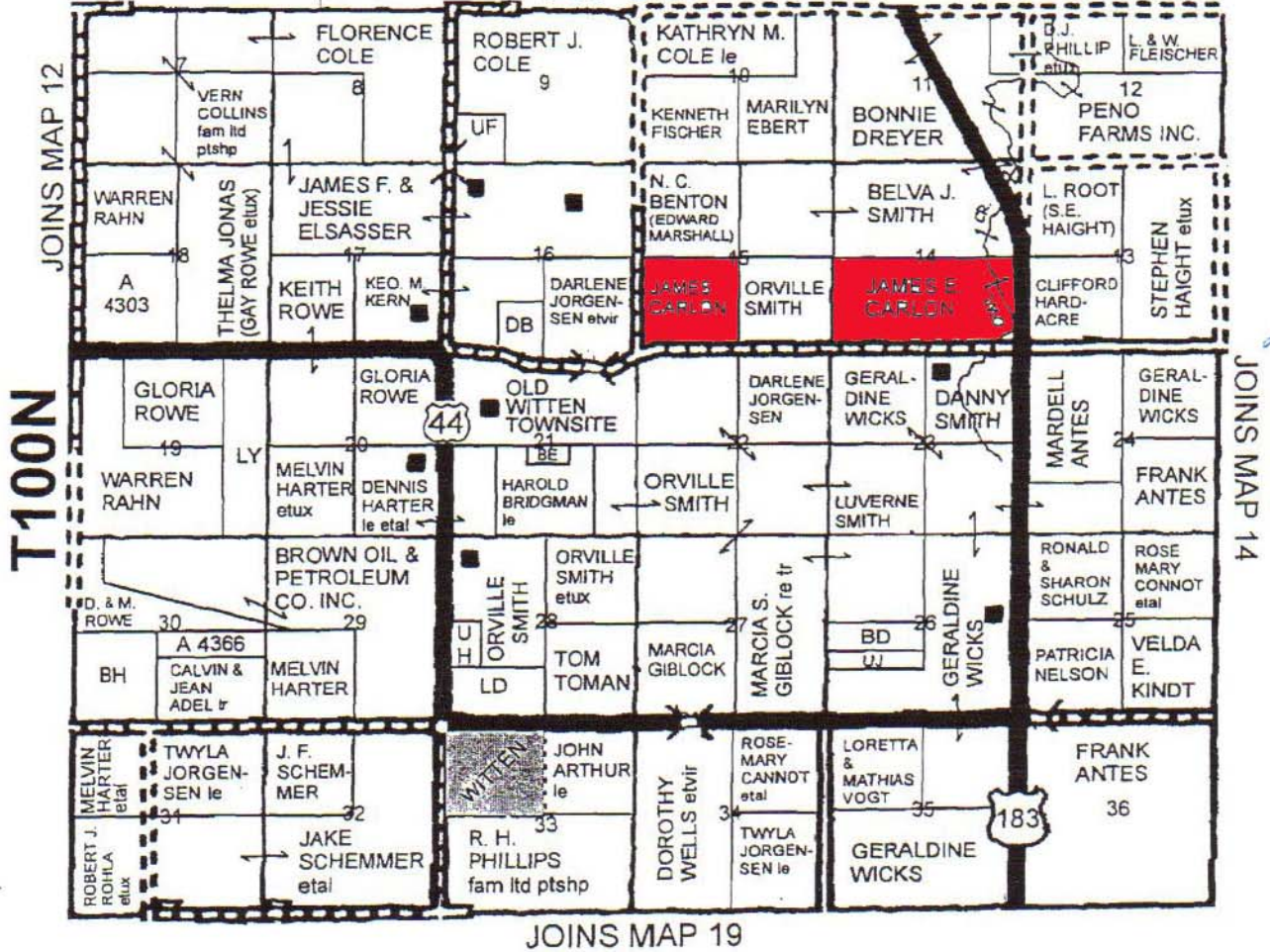
Field borders provided by Farm Service Agency as of 5/23/2008. Aerial photography provided by Aerial Photography Field Office.

# MAP 13

JOINS MAP 7

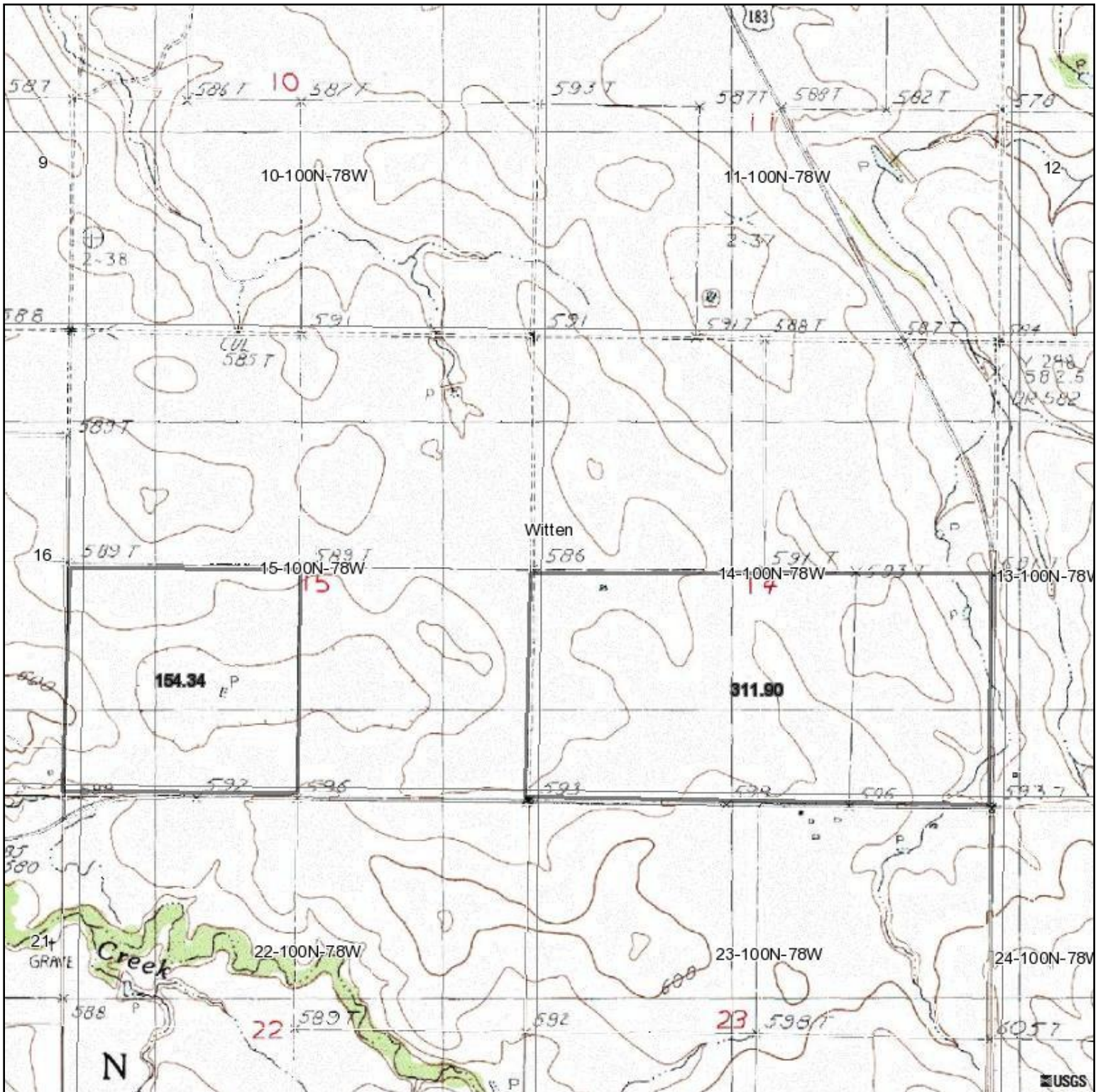
## R78W

JOINS MAP 8



JOINS MAP 19

# Topography Map



map center: 43° 28' 51.88, 100° 2' 48.93

scale: 21593

**14-100N-78W**  
**Tripp County**  
**South Dakota**



3/3/2009

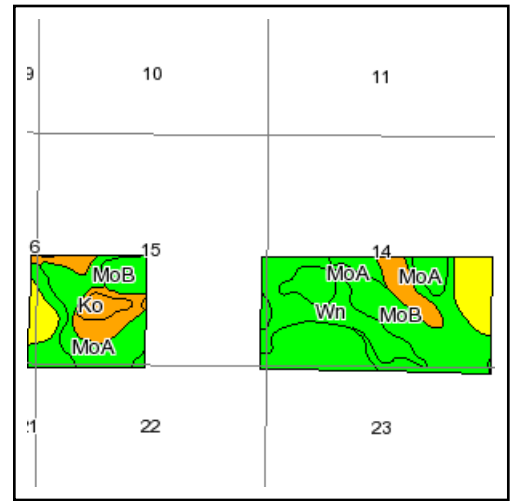
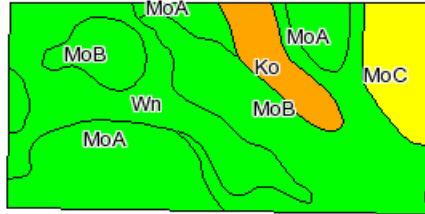
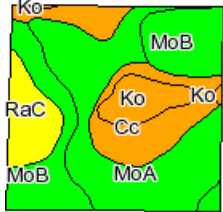
Maps provided by:



©AgriData, Inc. 2009

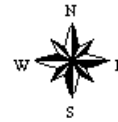
www.AgriDataInc.com

Field borders provided by Farm Service Agency as of 5/23/2008. Aerial photography provided by Aerial Photography Field Office.



State: **South Dakota**  
 County: **Tripp**  
 Location: **015-100N-078W**  
 Township: **Witten**  
 Acres: **466.2**

Fsa borders provided by the Farm Service Agency.  
 Soils data provided by USDA and NRCS.



Maps provided by:



Code	Soil Description	PI Legend	Acres	Percent of field	Non-Irr Class	Productivity Index	State Productivity Index	Alfalfa hay	Bromegrass alfalfa	Cool season grasses	Corn	Grain sorghum	Oats	Tall whe
MoB	Millboro silty clay, 3 to 6 percent slopes		155.6	33.4%	IIIe	77	52	1.9			36	48	50	
MoA	Millboro silty clay, 0 to 3 percent slopes		133.3	28.6%	IIIs	84	57	2			38	51	52	
Wn	Witten silty clay		69.9	15.0%	IIIs	77	52	2.2	3.7		42	60	60	
Ko	Kolls clay		33.3	7.1%	Vw	29	20							
Cc	Carter silty clay loam		29.7	6.4%	IVs	40	27	1.1		1.8	25	35	40	
MoC	Millboro silty clay, 6 to 9 percent slopes		29.7	6.4%	IVe	63	43	1.6			31	39	43	
RaC	Ree loam, 6 to 9 percent slopes		14.7	3.1%	IIIe	63	43	1.4	2.3			39		
<b>Weighted Average</b>						<b>71.9</b>	<b>48.7</b>	<b>1.8</b>	<b>0.6</b>	<b>0.1</b>	<b>32.8</b>	<b>45.6</b>	<b>45.9</b>	