

04°07'30"

F

104°00'00"

G

103°52'30"

H

103°45'00"

I

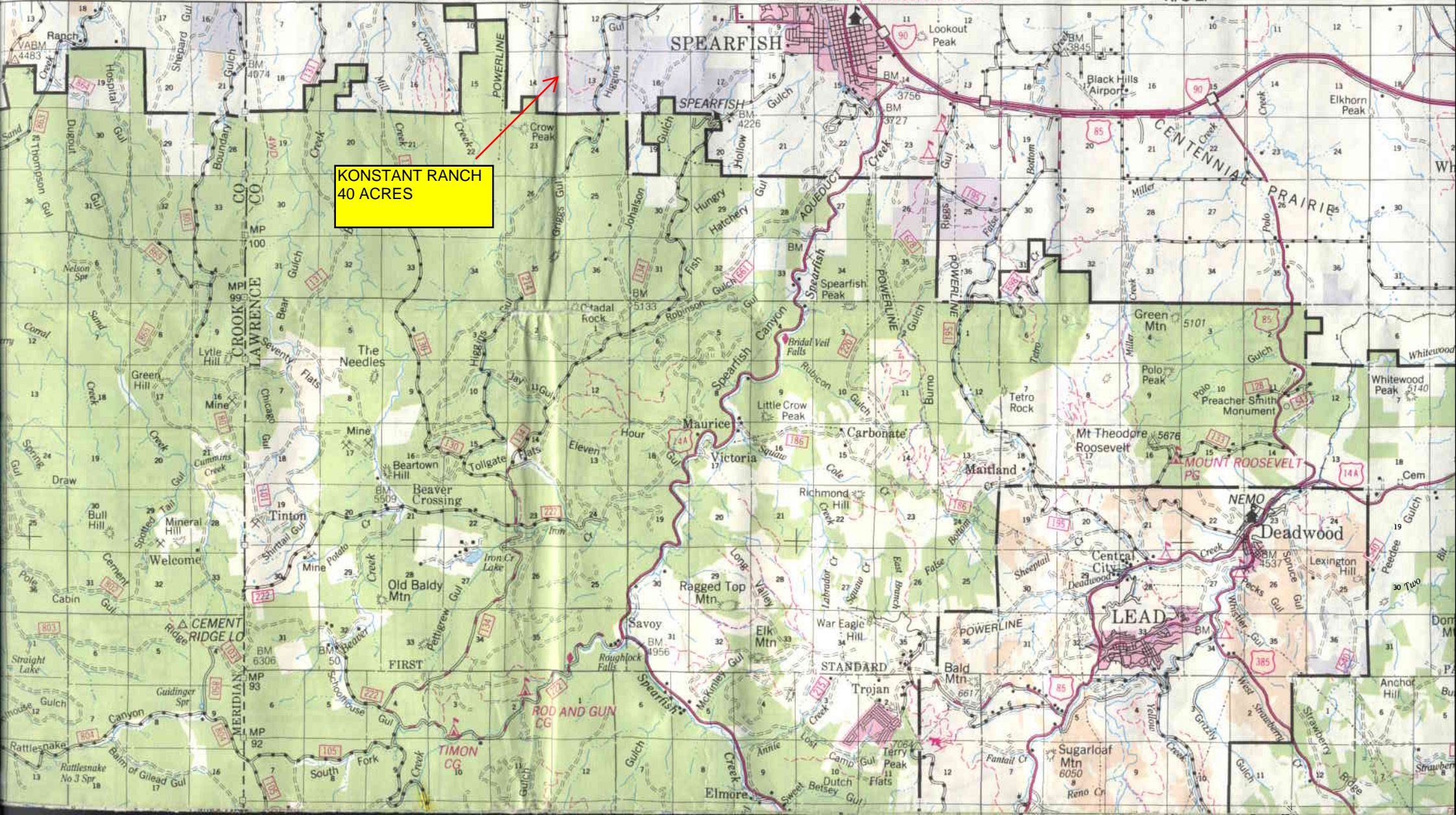
R. 60 W.

R. 1 E.

R. 2 E.

R. 3 E.

BELL FOURCHE 10 MILES



KONSTANT RANCH  
40 ACRES



Crow Peak  
23

SPEARFISH

SPEARFISH

Maurice

Victoria

Savoy

Elmore

Lookout Peak

Black Hills Airport

Green Mtn

Polo Peak

Mt Theodore Roosevelt

Maitland

Richmond Hill

War Eagle Hill

STANDARD

Trojan

Black Hills Airport

Miller

Polo Peak

Polo Peak

Mt Theodore Roosevelt

Maitland

Richmond Hill

War Eagle Hill

STANDARD

Trojan

Black Hills Airport

Miller

Polo Peak

Polo Peak

Mt Theodore Roosevelt

Maitland

Richmond Hill

War Eagle Hill

STANDARD

Trojan

Black Hills Airport

Miller

Polo Peak

Polo Peak

Mt Theodore Roosevelt

Maitland

Richmond Hill

War Eagle Hill

STANDARD

Trojan

Black Hills Airport

Miller

Polo Peak

Polo Peak

Mt Theodore Roosevelt

Maitland

Richmond Hill

War Eagle Hill

STANDARD

Trojan

R01E

581321

586321

R02E

591321

596321

Nebraska

Lawrence County

SOUTH DAKOTA

Crow Creek  
Beaver Creek  
CTY-009

US-14

I-90W

I-90E

US-14

US-85

CTY-010A

US-85

SPEARFISH

KONSTANT RANCH  
40 ACRES

CROW PEAK

HIGGINS  
GULCH

BEAR/BEAVER  
GULCHES

ANYON

False Bottom Creek

become familiar with restrictions by

