

Aerial Map



Maps provided by:



©AgriData, Inc. 2010

www.AgriDataInc.com

27-23N-18E
Corson County
South Dakota

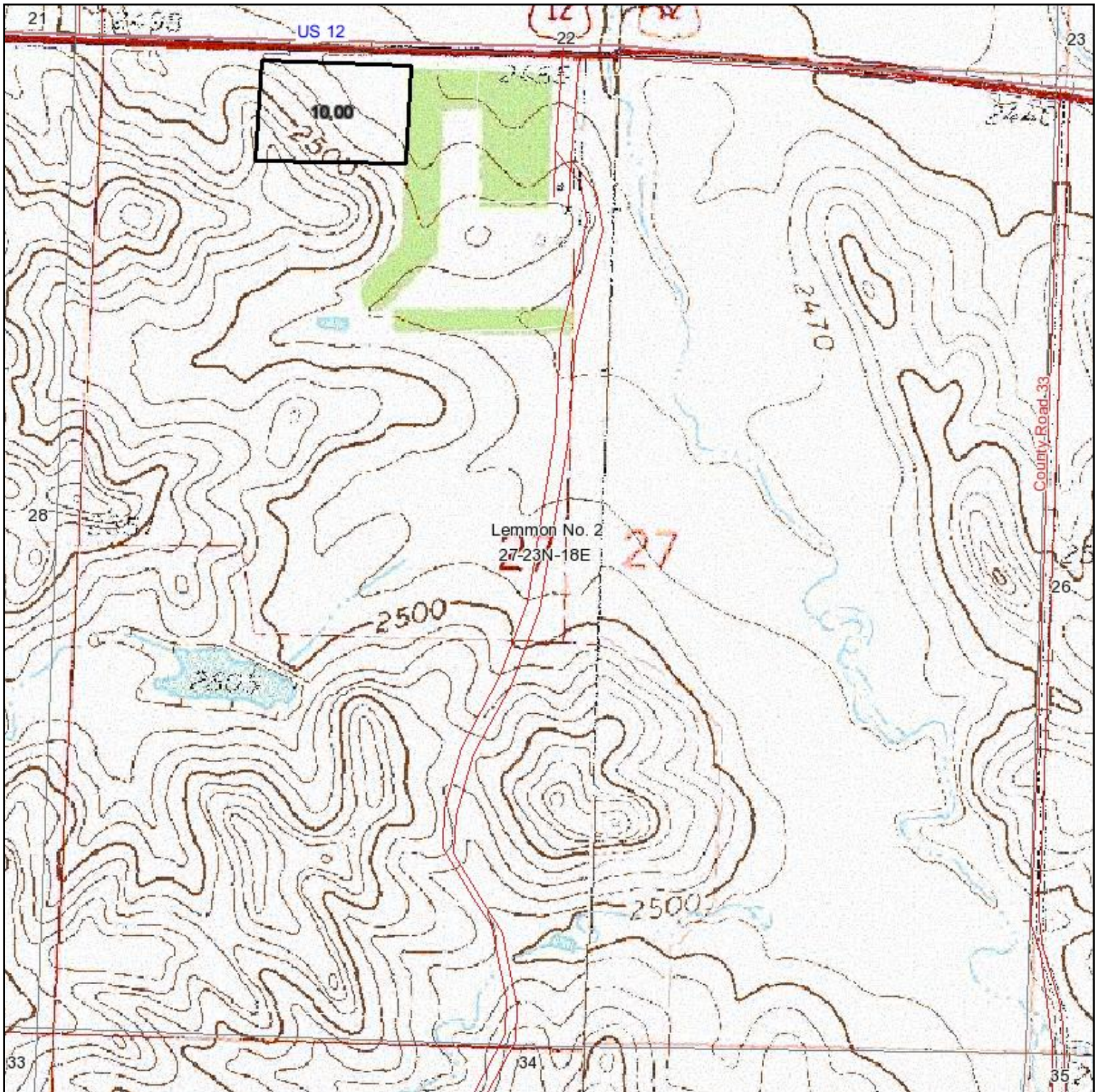
map center: 45° 55' 38.56, 101° 52' 35.41

scale: 10269



8/9/2010

Topography Map



Maps provided by:



©AgriData, Inc. 2010

www.AgriDataInc.com

27-23N-18E
Corson County
South Dakota

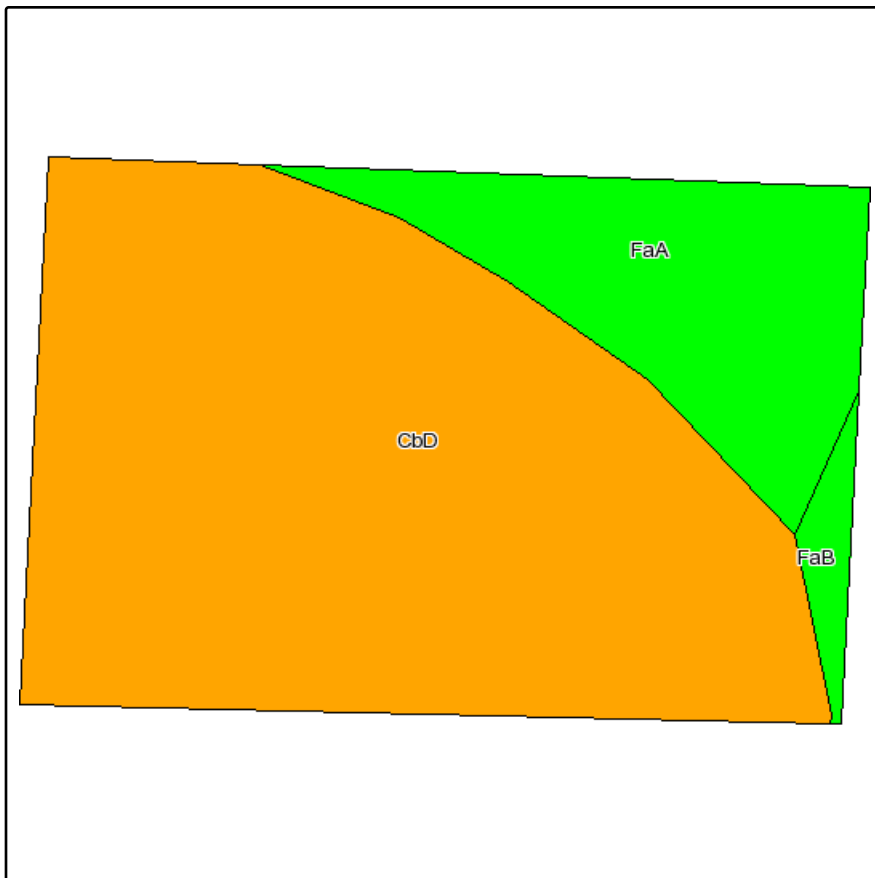
map center: 45° 55' 38.56, 101° 52' 35.41

scale: 10269

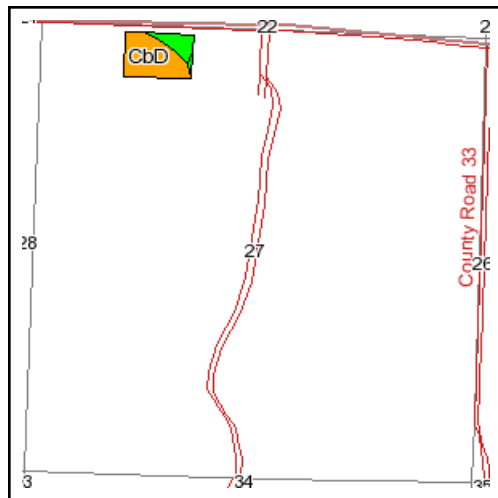


8/9/2010

Soils Map



Fsa borders provided by the Farm Service Agency as of May 23, 2008.
Soils data provided by USDA and NRCS.






State: **South Dakota**
 County: **Corson**
 Location: **027-023N-018E**
 Township: **Lemmon No. 2**
 Acres: **10**
 Date: **8/9/2010**



Maps provided by:



©AgriData, Inc 2008
www.AgriDataInc.com

Code	Soil Description	Acres	Percent of field	PI Legend	Non-Irr Class	Productivity Index	Alfalfa hay	Grain sorghum	Oats	Spring wheat	Winter wheat
CbD	Cabba-Reeder loams, 6 to 25 percent slopes	7.7	76.9%		Ve	22					
FaA	Farnuf loam, 0 to 2 percent slopes	2.1	20.8%		IIc	84	1.8	39	50	32	37
FaB	Farnuf loam, 2 to 6 percent slopes	0.2	2.3%		IIe	79	1.6	37	48	30	35
Weighted Average						36.2	0.4	9	11.5	7.3	8.5