

# CERTIFICATE OF SURVEY

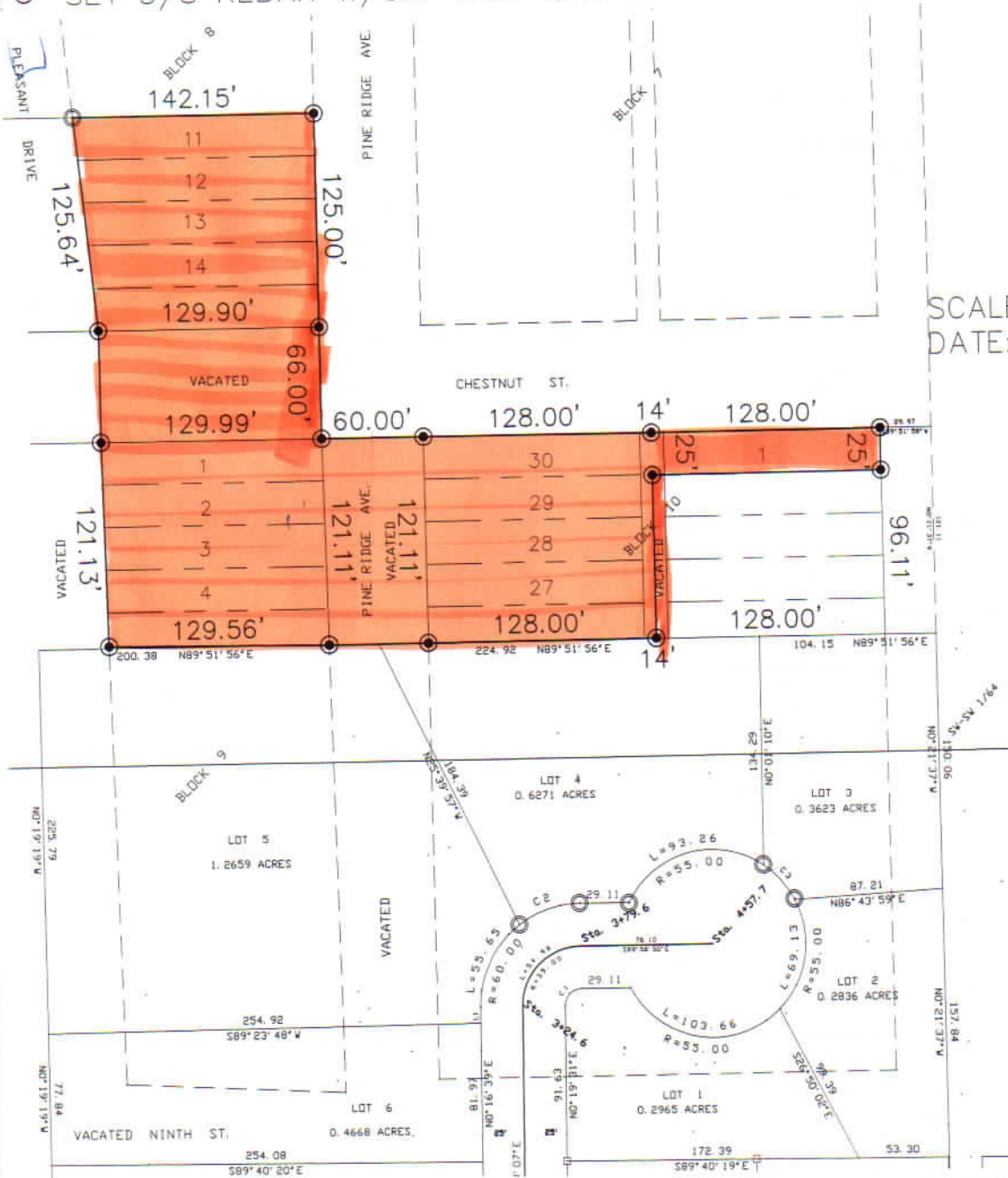
Lots 11-15, the E1/2 vacated Pleasant Drive, and the N1/2 vacated Chestnut Street adjoining, Block 8, Lots 1-5, the E1/2 vacated Pleasant Drive, the S1/2 vacated Chestnut Street, and the W1/2 vacated Pine Ridge Avenue adjoining, Block 9, lying North of Platted Eagle Heights Estates, Lots 26-30, the E1/2 vacated Pine Ridge Avenue, Lot 1, and the portion of vacated alley adjoining said lots, Block 10, lying North of Platted Eagle Heights Estates, all in Glenwood Addition, City of Pierre, Hughes County, South Dakota

## LEGEND

- FOUND MONUMENTS
- SET 5/8 REBAR W/CAP L.S. 4041



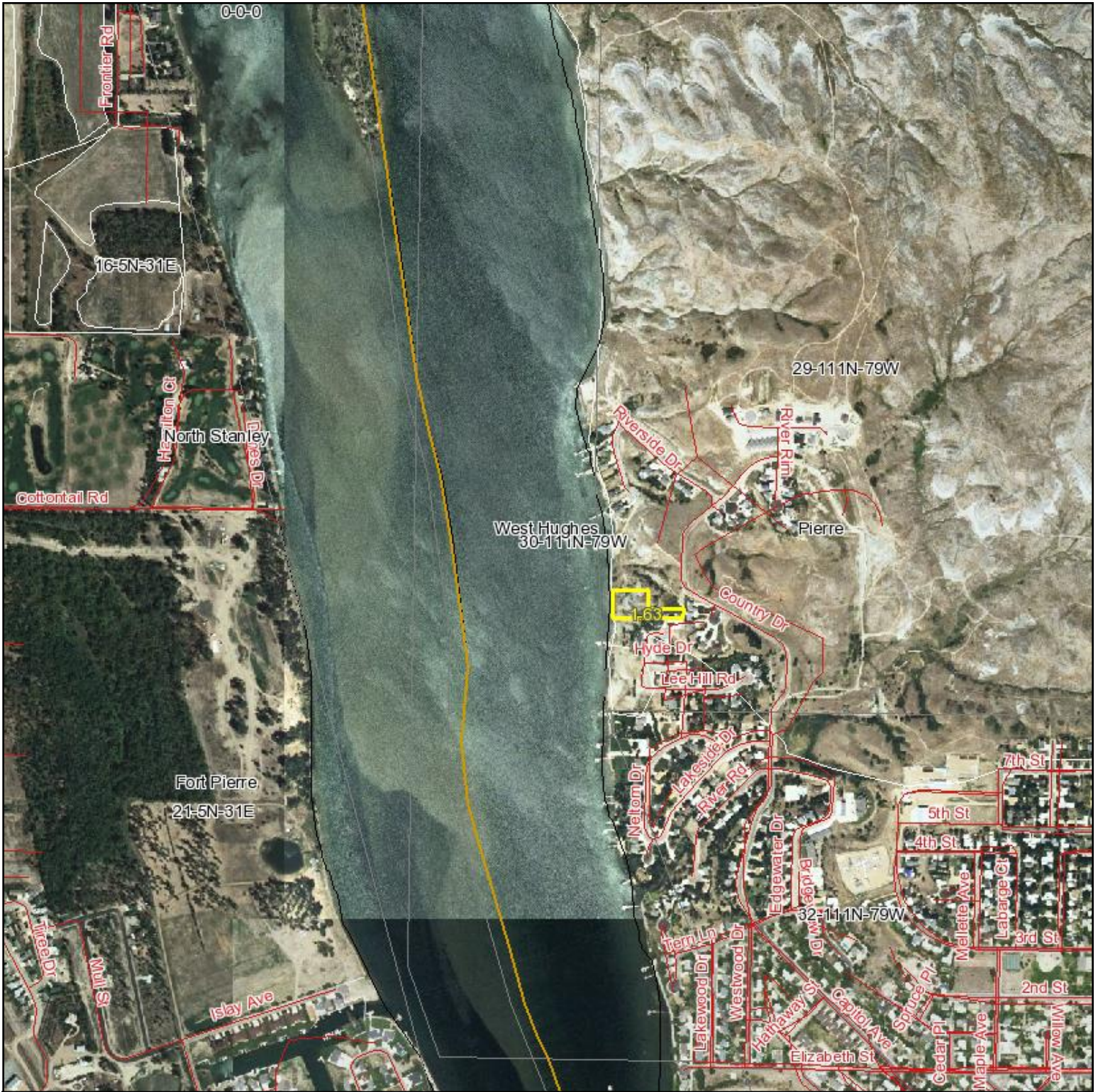
SCALE: 1" = 100'  
DATE: 03/31/05



SURVEYORS CERTIFICATE:



# Aerial Map



West Hughes  
30-111N-79W

29-111N-79W

16-5N-31E

Fort Pierre  
21-5N-31E

32-111N-79W



Maps provided by:



©AgriData, Inc. 2009

www.AgriDataInc.com

**30-111N-79W**  
**Hughes County**  
**South Dakota**

map center: 44° 23' 7.18, 100° 22' 17.97

scale: 13990



4/30/2009