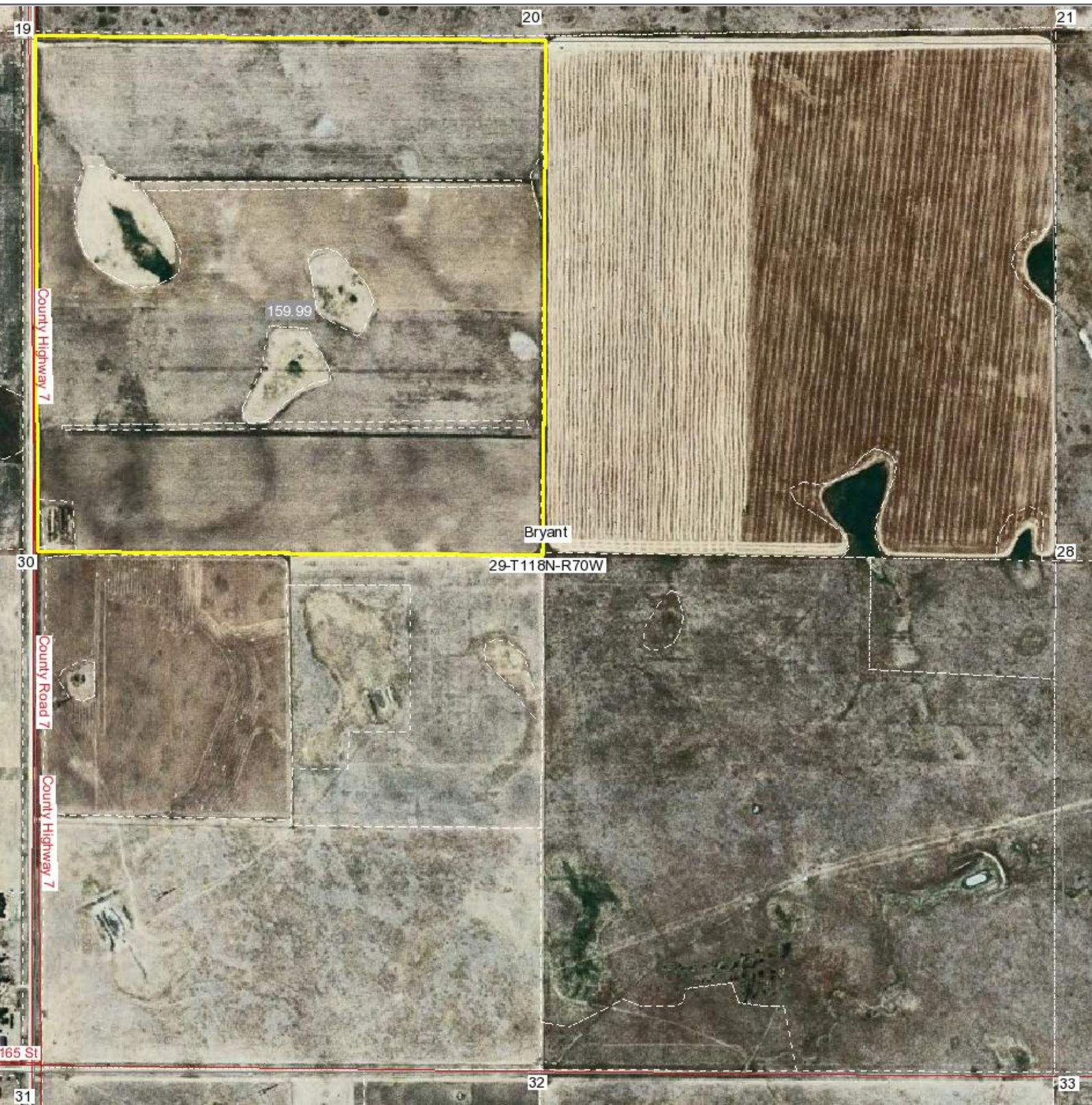


# Aerial Map



map center: 45° 0' 21.72, 99° 17' 53.08  
scale: 1:8580

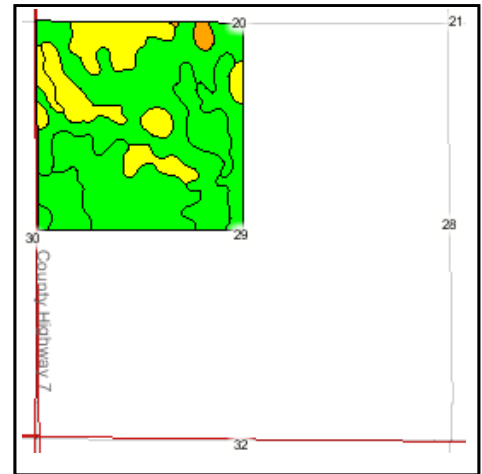
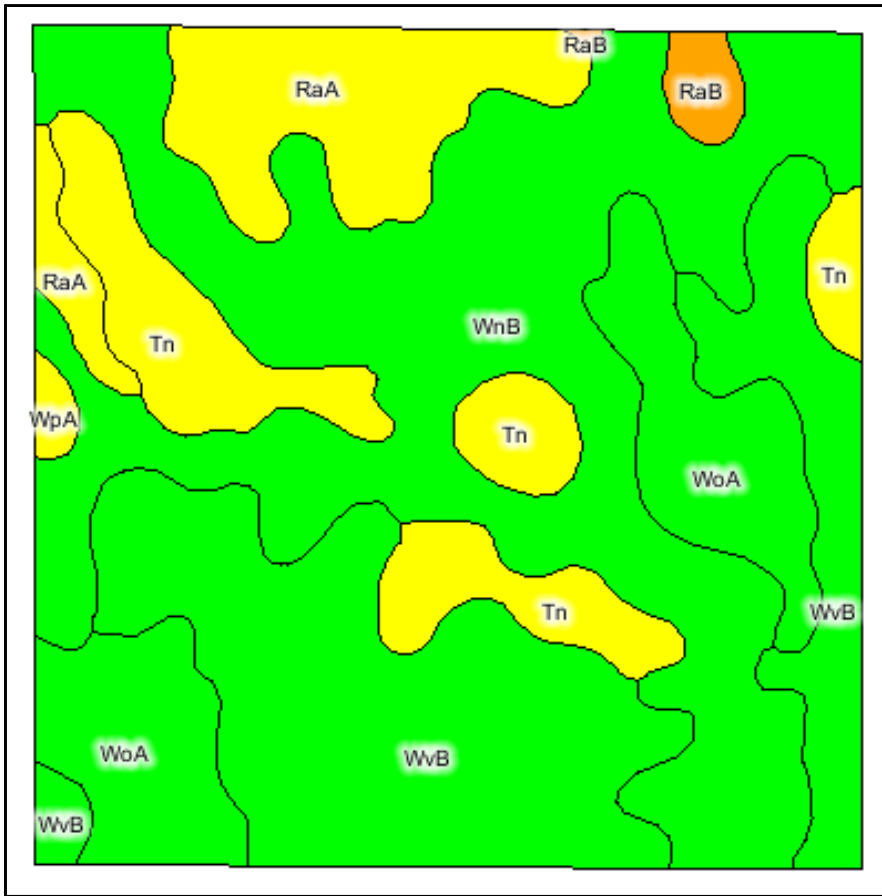
**29-118N-70W**  
**Faulk County**  
**South Dakota**



8/15/2008

Map Provided by  
  
CUSTOMIZED ONLINE MAPPING  
©AgriData, Inc. 2008  
www.AgriDataInc.com

# Soils Map



State: **SD**  
 County: **Faulk**  
 Location: **29-118N-70W**  
 Township: **Bryant**  
 Acres: **160.0**

Fsa borders provided by the Farm Service Agency.

Soils data provided by USDA and NRCS.



Maps provided by:



© AgriData, Inc. 2007  
 www.AgriDataInc.com

Code	Soil Description	PI Legend	Acres	Percent of field	Non-Irr Class	Productivity Index	Alfalfa hay	Barley	Bromegrass-alfalfa	Corn	Crested wheatgrass-alfalfa hay	Flax	Grain sorghum	Oat
WnB	Williams-Bowbells loams, 1 to 6 percent slopes	Green	60.5	37.8%	Ile	80	0	44	0	0	2.3	14	0	5
WvB	Williams-Bowbells-Vida loams, 1 to 6 percent slopes	Green	44.3	27.7%	Ile	76	0	44	0	0	2.3	14	0	5
WoA	Williams-Bowbells-Nishon complex, 0 to 3 percent slopes	Green	19.0	11.9%	Ilc	77	0	47	0	0	2.3	15	0	6
Tn	Tonka-Nishon silt loams	Yellow	18.2	11.4%	IVw	52	0	15	0	0	0	0	0	2
RaA	Raber-Cavo complex, 0 to 2 percent slopes	Yellow	15.4	9.6%	IIIc	57	2	0	3.3	33	0	15	48	4
RaB	Raber-Cavo complex, 2 to 6 percent slopes	Orange	1.8	1.1%	IIIe	50	2	0	3.3	32	0	12	44	4
WpA	Williams-Bowbells-Noonan loams, 0 to 3 percent slopes	Yellow	0.8	0.5%	Ilc	72	0	47	0	0	2.3	15	0	6
<b>Weighted Average</b>						<b>73</b>	<b>0</b>	<b>36</b>	<b>0.4</b>	<b>4</b>	<b>1.8</b>	<b>13</b>	<b>5</b>	<b>5</b>