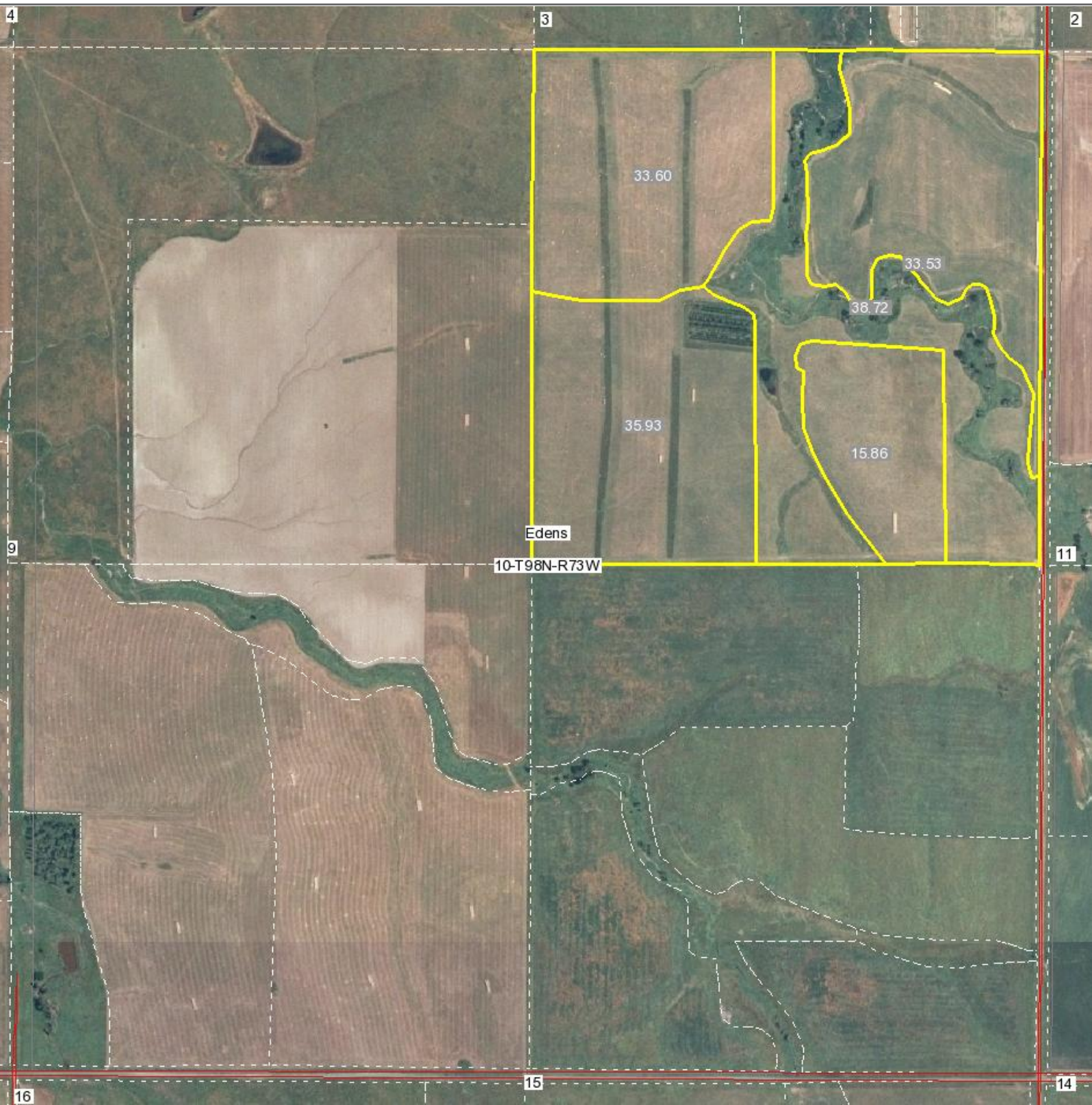


# Aerial Map



map center: 43° 19' 15.07, 99° 27' 52.62  
scale: 1:8528

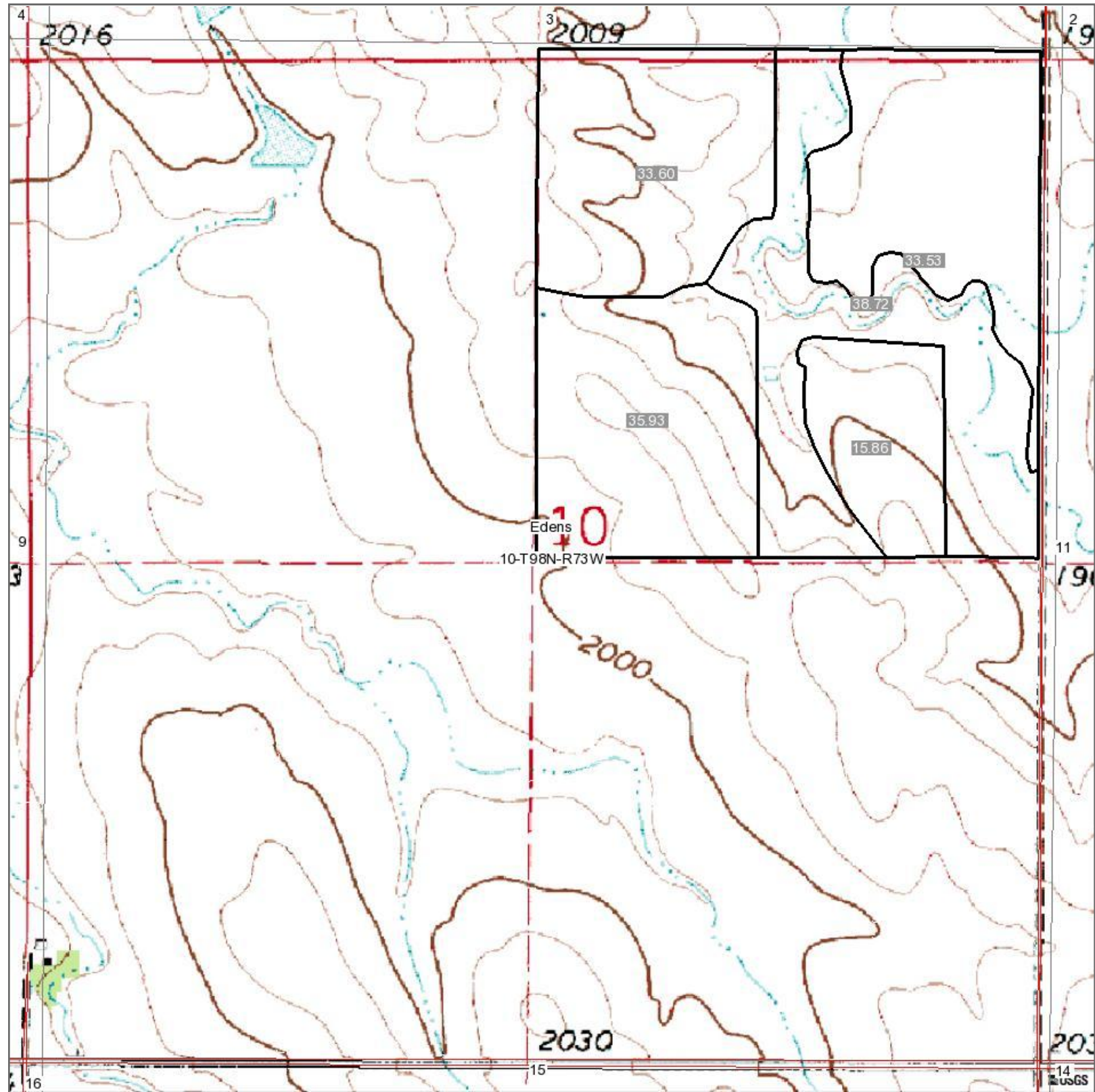
**10-98N-73W**  
**Gregory County**  
**South Dakota**



1/30/2008

Map Provided by  
  
CUSTOMIZED ONLINE MAPPING  
©AgriData, Inc. 2006

# Topography Map



map center: 43° 19' 15.07, 99° 27' 52.62  
scale: 1:8528

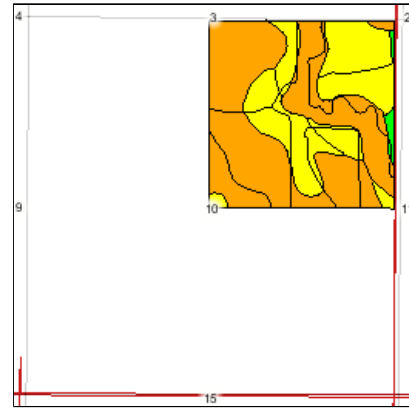
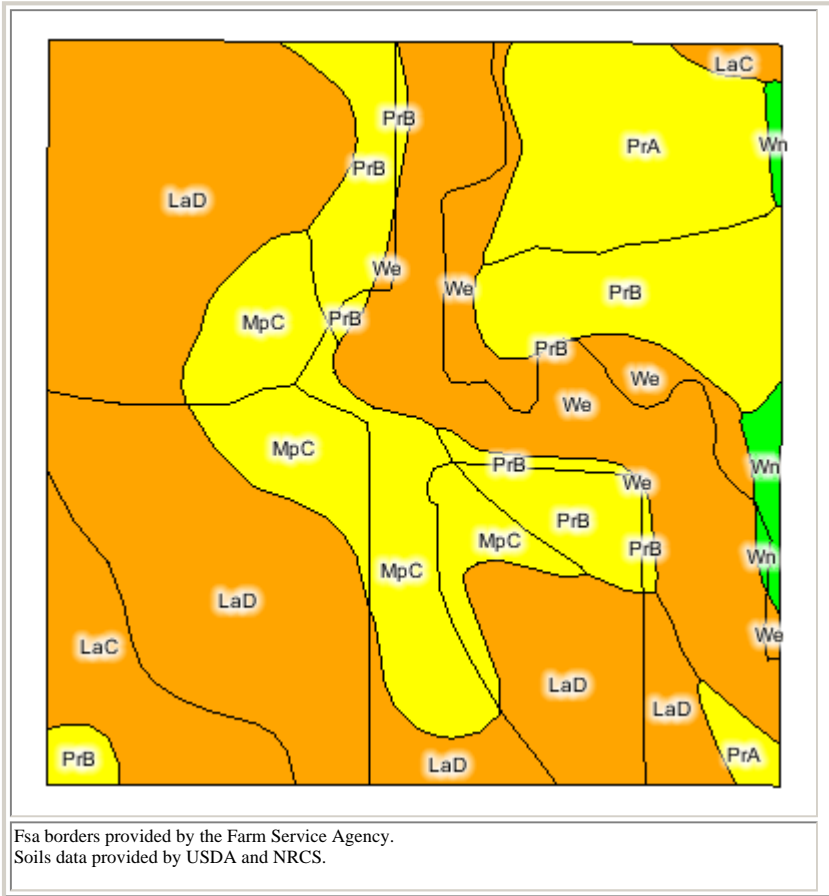
**10-98N-73W**  
**Gregory County**  
**South Dakota**



1/30/2008

Map Provided by  
  
CUSTOMIZED ONLINE MAPPING  
©AgriData, Inc. 2006

# Soils Map



State: **SD**  
 County: **Gregory**  
 Location: **10-98N-73W**  
 Township: **Edens**  
 Acres: **157.6**



© 2006 AgriData, Inc.

Code	Soil Description	PI Legend	Acres	Percent of field	Non-Irr Class	Irr Class	Productivity Index	Alfalfa hay	Alfalfa hay Irrigated	Brome-grass-alfalfa	Corn	Corn Irrigated	Grain sorghum	Oats	Soybeans	Soybeans Irrigated	Tall wheatgrass
LaD	Labu clay, 9 to 15 percent slopes		60.5	38.4%	VIe		36	0	0	0	0	0	0	0	0	0	0
We	Wendte silty clay, channeled		27.7	17.6%	VIw		34	0	0	0	0	0	0	0	0	0	2.5
PrB	Promise clay, 3 to 6 percent slopes		21.9	13.9%	IIIe		68	1.6	0	0	31	0	48	50	0	0	2.6
MpC	Millboro-Lakoma silty clays, 6 to 9 percent slopes		20.6	13.1%	IVe		61	1.6	0	0	31	0	39	43	0	0	2.7
PrA	Promise clay, 0 to 3 percent slopes		15.6	9.9%	IIIs		71	1.7	0	0	33	0	50	52	0	0	2.8
LaC	Labu clay, 6 to 9 percent clay		9.3	5.9%	IVe	IVe	42	1.0	5	0	24	110	38	25	16	25	0
Wn	Witten silty clay		2.0	1.3%	IIIs		80	2.2	0	3.7	42	0	60	60	0	0	0
<b>Weighted Average</b>							<b>48</b>	<b>0.7</b>	<b>0</b>	<b>0.0</b>	<b>14</b>	<b>6</b>	<b>20</b>	<b>20</b>	<b>1</b>	<b>1</b>	<b>1.4</b>