

Aerial Map



map center: 44° 25' 5.93, 100° 5' 53.08

scale: 9955



9/13/2010



Maps provided by:

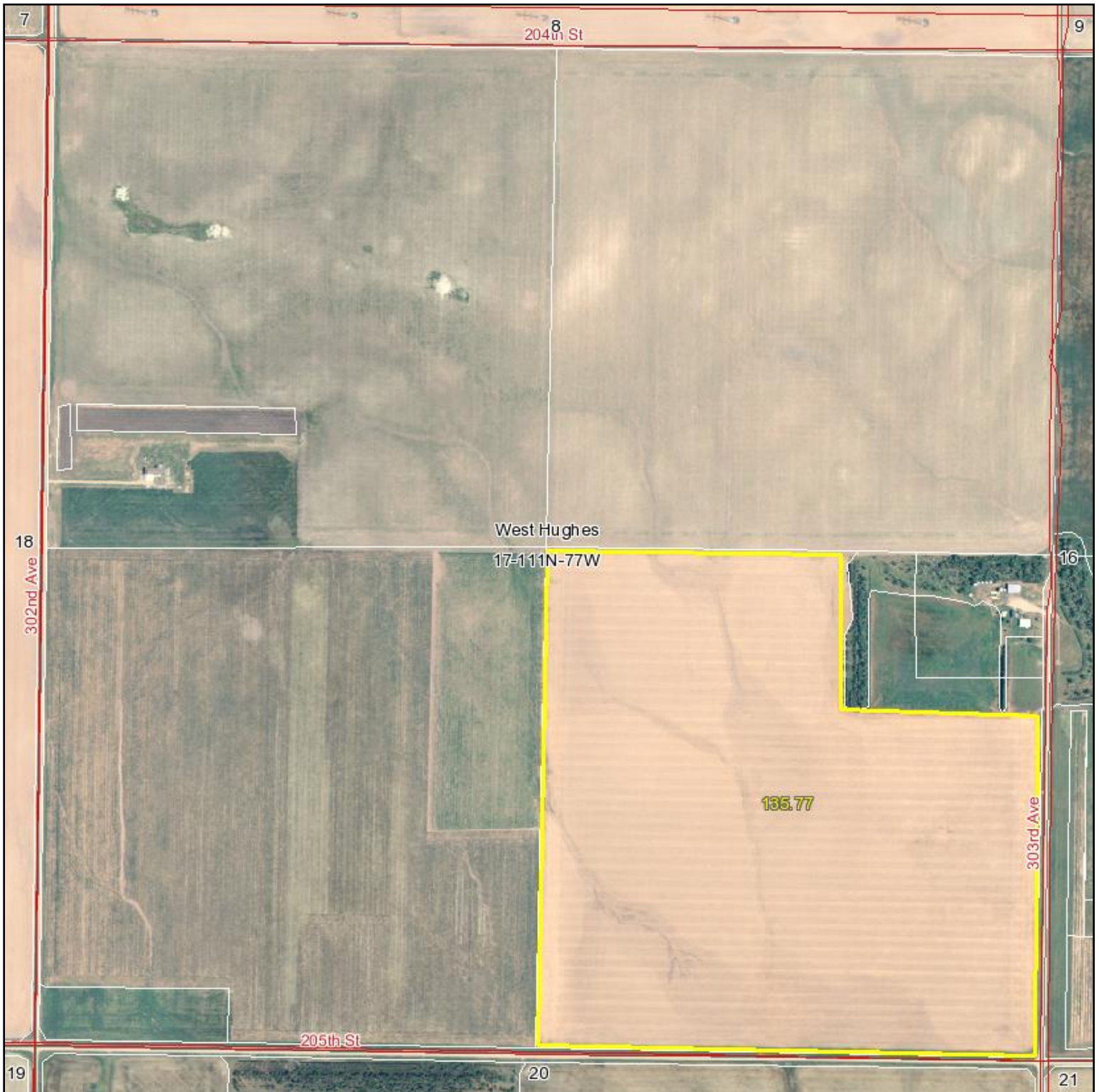


©AgriData, Inc. 2010

www.AgriDataInc.com

16-111N-77W
Hughes County
South Dakota

Aerial Map



Maps provided by:



©AgriData, Inc. 2010

www.AgriDataInc.com

17-111N-77W
Hughes County
South Dakota

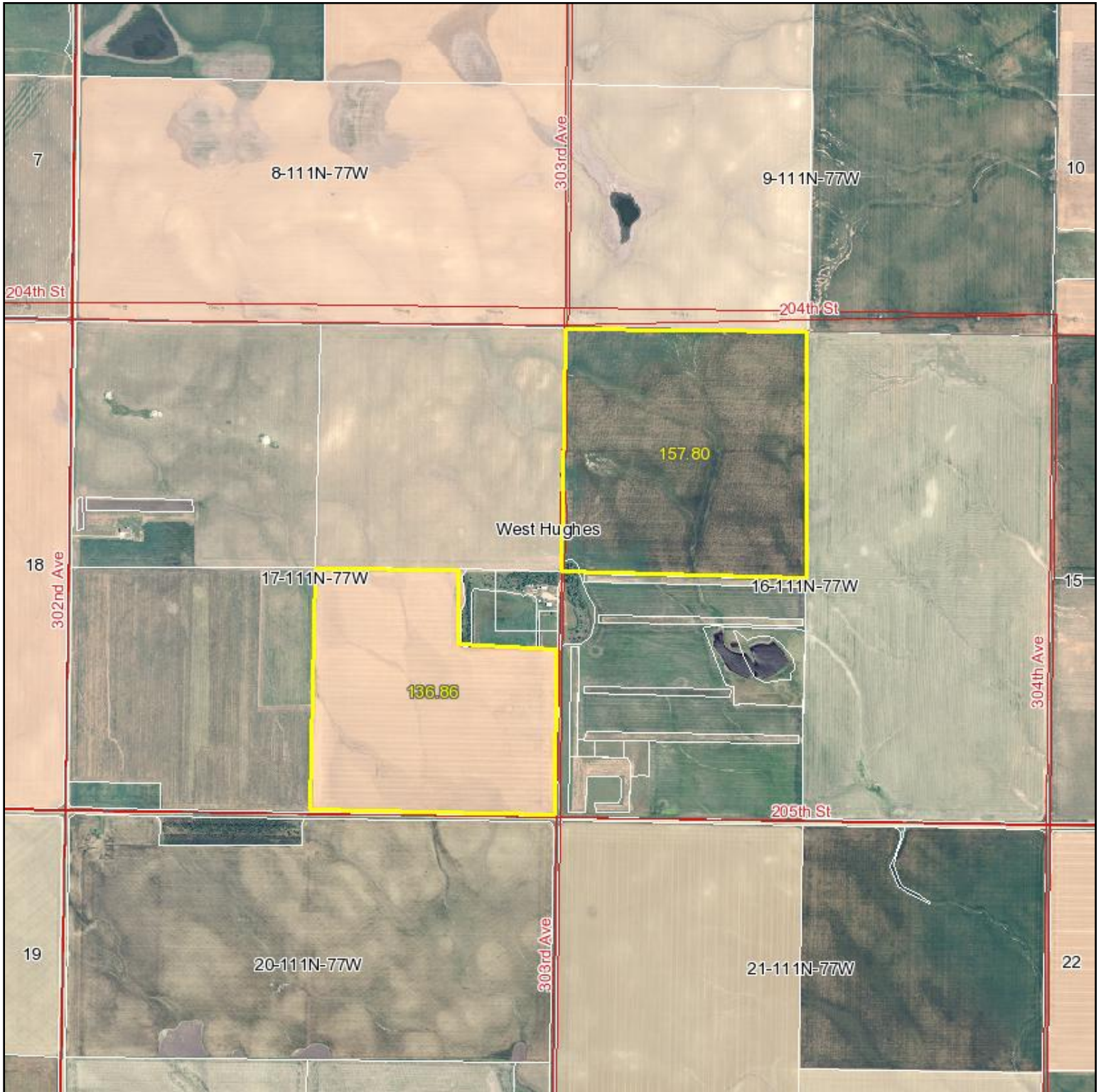
map center: 44° 25' 6.02, 100° 7' 5.87

scale: 9973



9/13/2010

Aerial Map



Maps provided by:



©AgriData, Inc. 2010

www.AgriDataInc.com

17-111N-77W
Hughes County
South Dakota

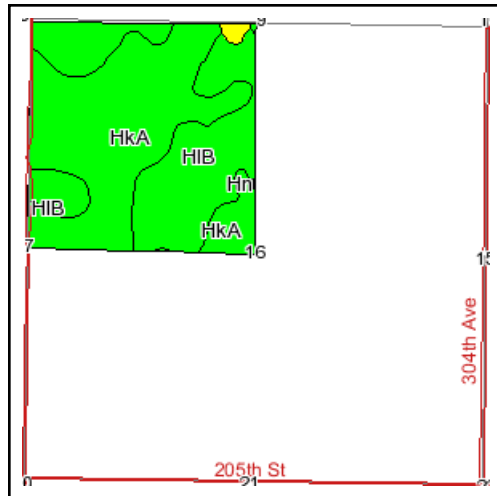
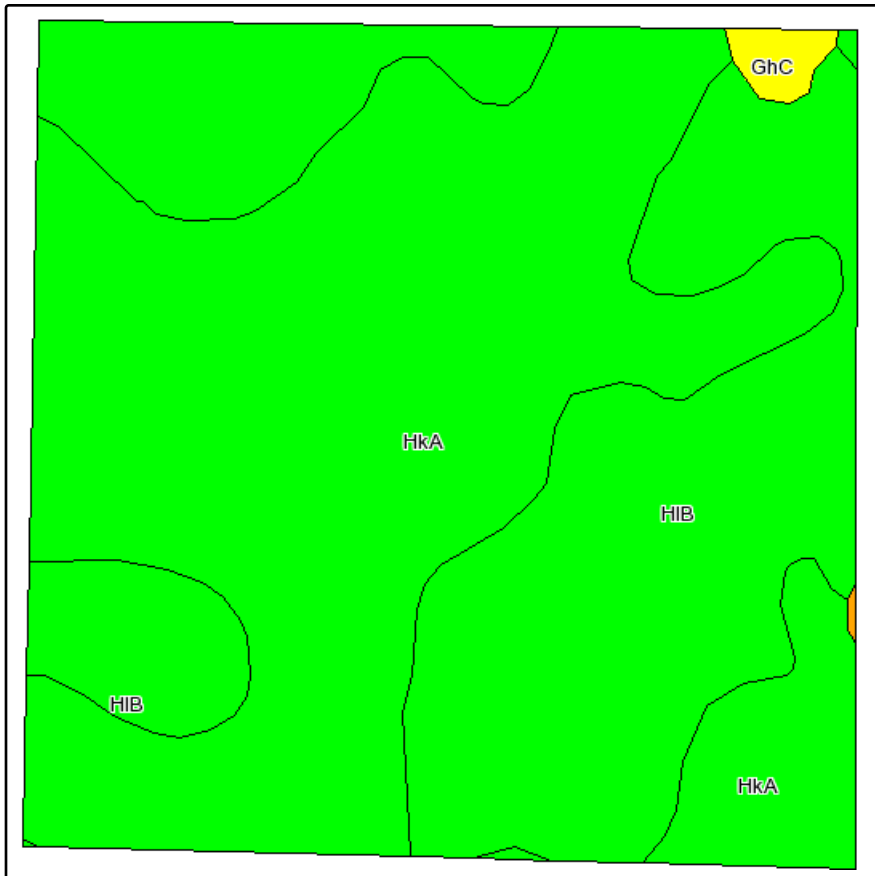
map center: 44° 25' 8.44, 100° 6' 31.27

scale: 20474

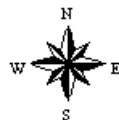


9/13/2010

Soils Map



State: **South Dakota**
 County: **Hughes**
 Location: **016-111N-077W**
 Township: **West Hughes**
 Acres: **157.8**
 Date: **9/13/2010**



Maps provided by:

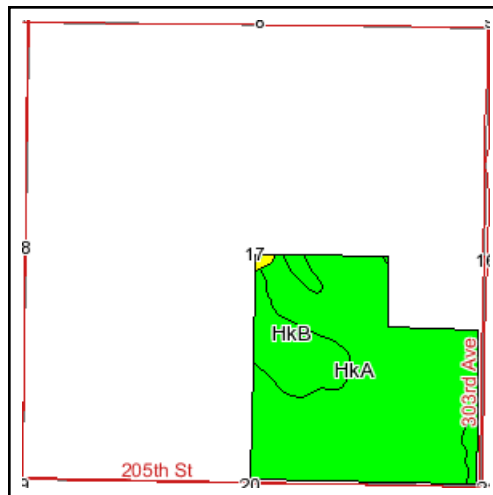
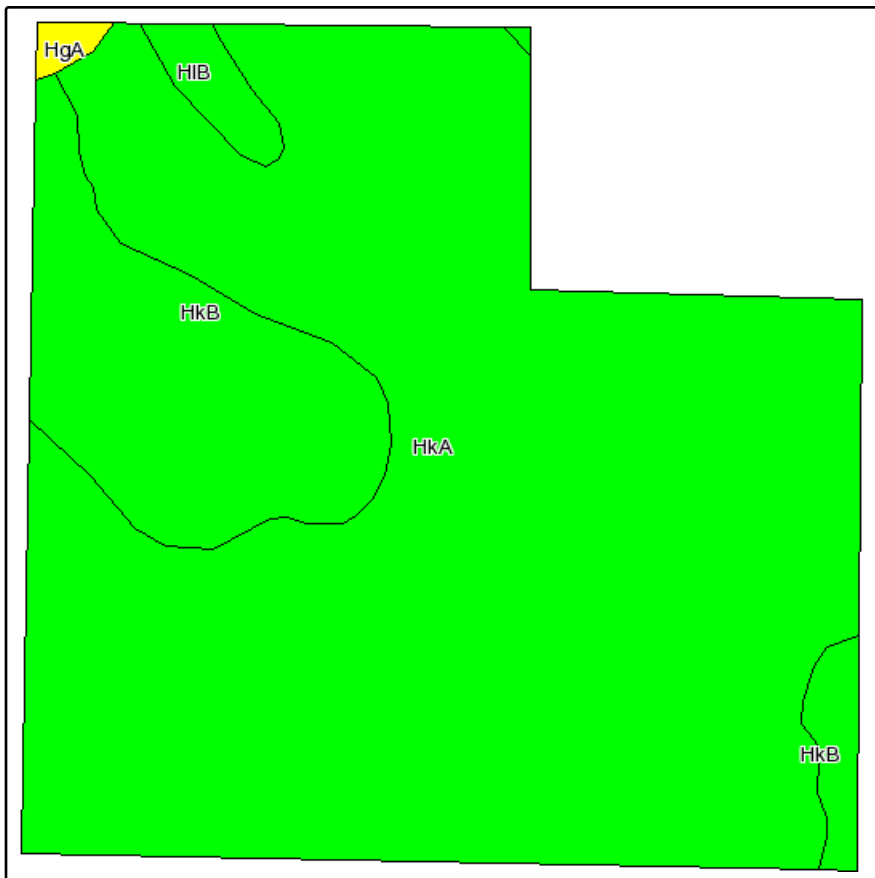


©AgriData, Inc 2008
www.AgriDataInc.com

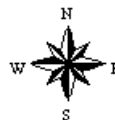
Fsa borders provided by the Farm Service Agency as of May 23, 2008.
Soils data provided by USDA and NRCS.

Code	Soil Description	Acres	Percent of field	PI Legend	Non-Irr Class	Productivity Index	Alfalfa hay	Bromegrass alfalfa	Corn	Grain sorghum	Oats	Spring wheat	Winter wheat
HkA	Highmore-Eakin silt loams, 0 to 2 percent slopes	90.3	57.3%		IIc	90	2.1	3.5	42	50	60	24	32
HIB	Highmore-Glenham silt loams, 2 to 5 percent slopes	65.9	41.7%		Ile	80	2	3.3	40	48	56	22	30
GhC	Glenham-Highmore silt loams, 5 to 9 percent slopes	1.4	0.9%		IIIe	62	1.9	3.1	31	36	46	22	29
Hn	Hoven silt loam	0.1	0.1%		VIIs	10							
OnA	Onita silt loam, 0 to 2 percent slopes	0.1	0.1%		IIc	89	2.8	4.7	60	63	63	29	35
Weighted Average						85.6	2.1	3.4	41.1	49.1	58.2	23.2	31.1

Soils Map



State: **South Dakota**
 County: **Hughes**
 Location: **017-111N-077W**
 Township: **West Hughes**
 Acres: **135.8**
 Date: **9/13/2010**



Maps provided by:

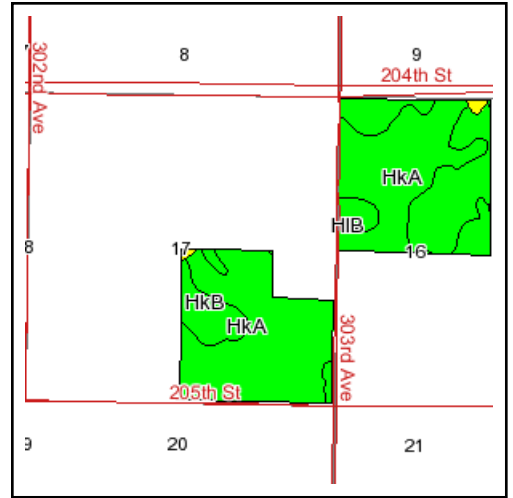
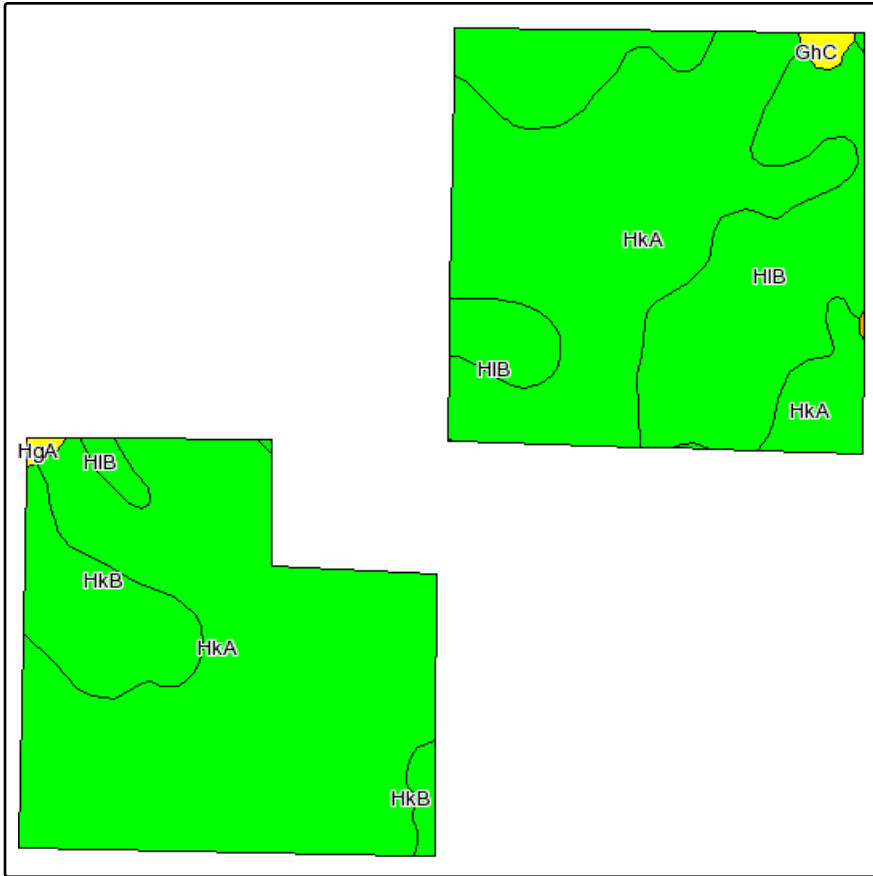


©AgriData, Inc 2008
www.AgriDataInc.com

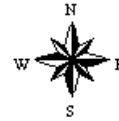
Fsa borders provided by the Farm Service Agency as of May 23, 2008.
Soils data provided by USDA and NRCS.

Code	Soil Description	Acres	Percent of field	PI Legend	Non-Irr Class	Productivity Index	Alfalfa hay	Bromegrass alfalfa	Corn	Grain sorghum	Oats	Spring wheat	Winter wheat
HkA	Highmore-Eakin silt loams, 0 to 2 percent slopes	111.5	82.1%		IIc	90	2.1	3.5	42	50	60	24	32
HkB	Highmore-Eakin silt loams, 2 to 5 percent slopes	21.5	15.8%		IIe	83	2	3.3	40	48	56	22	30
HIB	Highmore-Glenham silt loams, 2 to 5 percent slopes	2.2	1.6%		IIe	80	2	3.3	40	48	56	22	30
HgA	Highmore-DeGrey silt loams, 0 to 2 percent slopes	0.6	0.5%		IIIs	73	2.1	3.5	42	50	60	24	32
Weighted Average						88.6	2.1	3.5	41.7	49.7	59.3	23.7	31.7

Soils Map



State: **South Dakota**
 County: **Hughes**
 Location: **016-111N-077W**
 Township: **West Hughes**
 Acres: **294.7**
 Date: **9/13/2010**



Maps provided by:



©AgriData, Inc 2008
 www.AgriDataInc.com

Fsa borders provided by the Farm Service Agency as of May 23, 2008.
 Soils data provided by USDA and NRCS.

Code	Soil Description	Acres	Percent of field	PI Legend	Non-Irr Class	Productivity Index	Alfalfa hay	Brome grass alfalfa	Corn	Grain sorghum	Oats	Spring wheat	Winter wheat
HkA	Highmore-Eakin silt loams, 0 to 2 percent slopes	202.6	68.7%		IIc	90	2.1	3.5	42	50	60	24	32
HIB	Highmore-Glenham silt loams, 2 to 5 percent slopes	68	23.1%		IIe	80	2	3.3	40	48	56	22	30
HkB	Highmore-Eakin silt loams, 2 to 5 percent slopes	21.8	7.4%		IIe	83	2	3.3	40	48	56	22	30
GhC	Glenham-Highmore silt loams, 5 to 9 percent slopes	1.4	0.5%		IIIe	62	1.9	3.1	31	36	46	22	29
HgA	Highmore-DeGrey silt loams, 0 to 2 percent slopes	0.7	0.2%		IIIs	73	2.1	3.5	42	50	60	24	32
Hn	Hoven silt loam	0.1	0.0%		VI s	10							
OnA	Onita silt loam, 0 to 2 percent slopes	0.1	0.0%		IIc	89	2.8	4.7	60	63	63	29	35
Weighted Average						86.9	2.1	3.4	41.3	49.3	58.6	23.4	31.3