

R76W

1

ley

6

5

4

Tract 1

103.31

7-T111N-R76W

6-T111N-R76W

9-T111N-R75W

Tract 2

Tract 3

North Hughes

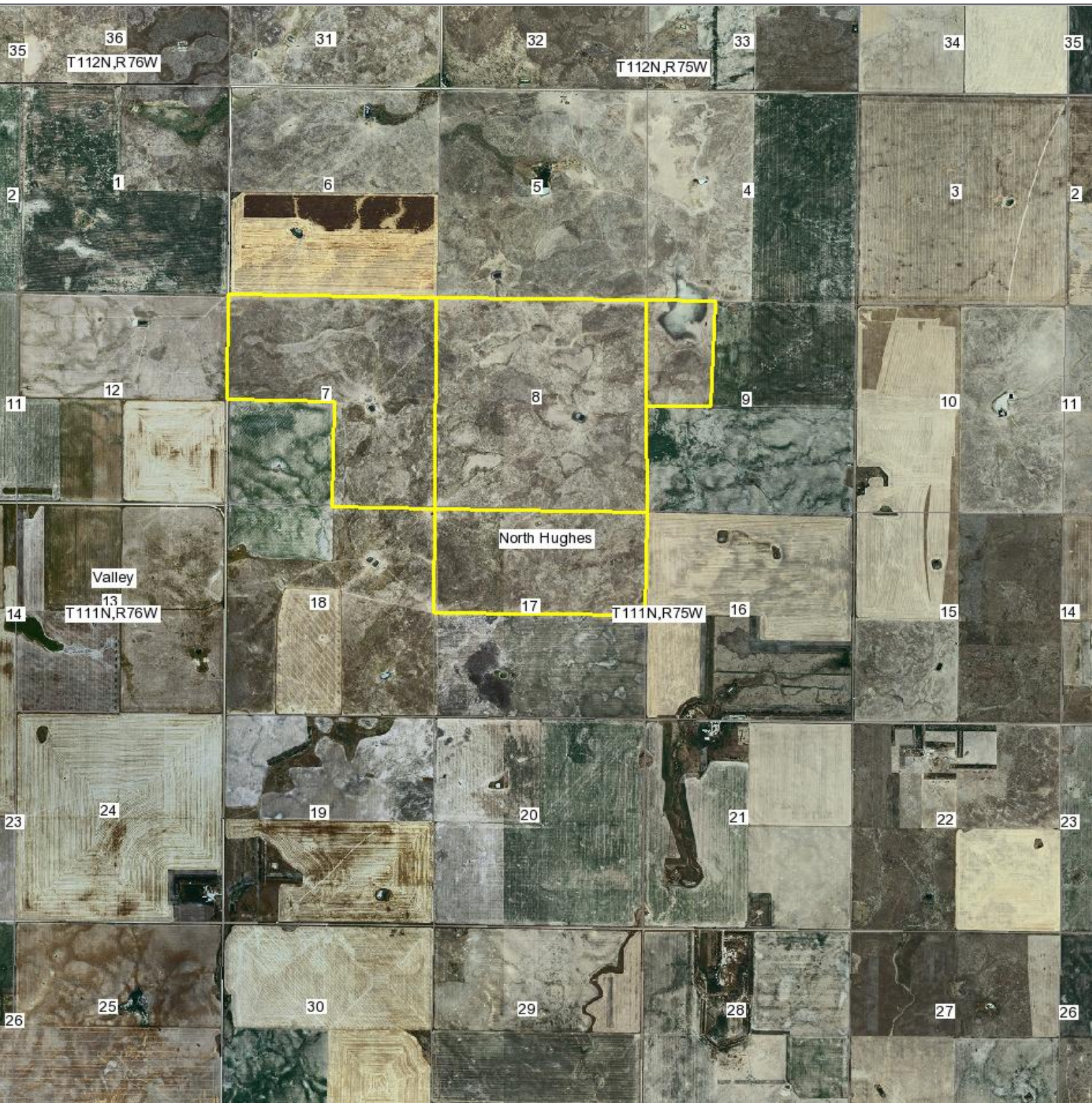
319.19

18-T111N-R76W

17-T111N-R75W

16-T111N-R75W

Aerial Map



map center: 44° 25' 20.16, 99° 52' 31.29
scale: 1:41890

Map Provided by

CUSTOMIZED ONLINE MAPPING
©AgriData, Inc. 2006

**Hughes County
South Dakota**



11/6/2007

Field borders provided by Farm Service Agency. Aerial photography provided by Aerial Photography Field Office.

Aerial Map



map center: 44° 25' 45.4, 99° 52' 57.93
scale: 1:18659

7-111N-75W
Hughes County
South Dakota



Map Provided by
surety
CUSTOMIZED ONLINE MAPPING
©AgriData, Inc. 2006

11/6/2007

Field borders provided by Farm Service Agency. Aerial photography provided by Aerial Photography Field Office.

Topography Map



USGS



map center: 44° 25' 45.4, 99° 52' 57.93
scale: 1:18659

Map Provided by
 surety
CUSTOMIZED ONLINE MAPPING
©AgriData, Inc. 2006

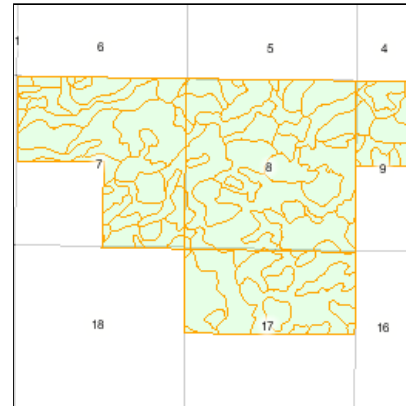
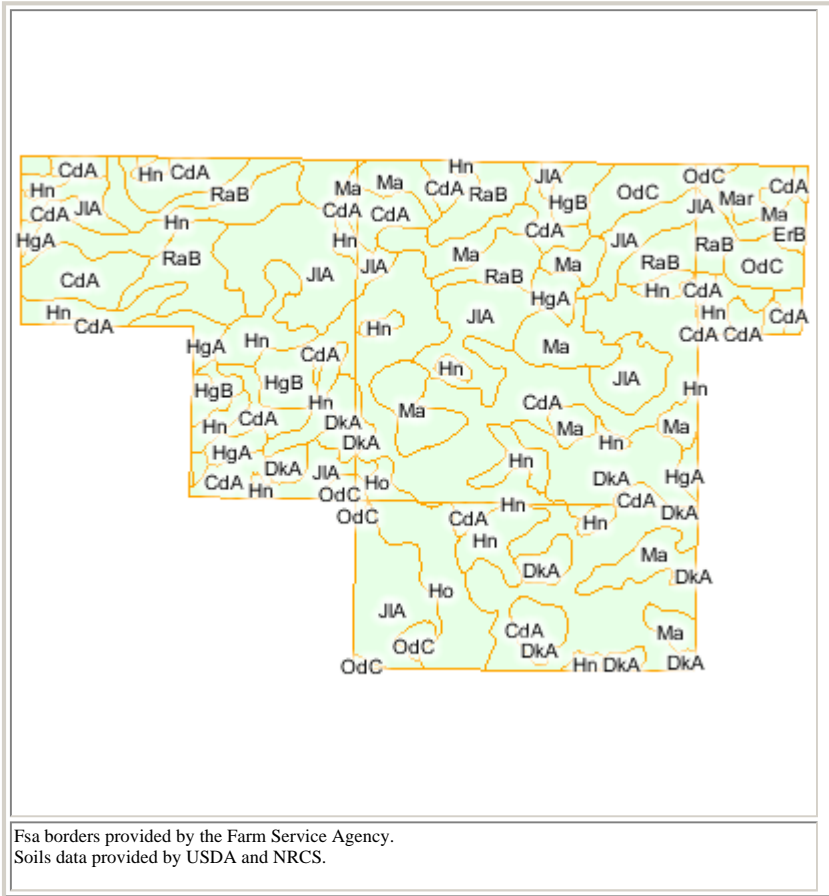
7-111N-75W
Hughes County
South Dakota



11/6/2007

Field borders provided by Farm Service Agency. Aerial photography provided by Aerial Photography Field Office.

Soils Map



State: **SD**
 County: **Hughes**
 Location: **17-111N-75W**
 Township: **North Hughes**
 Acres: **1,551.8**



© 2006 AgriData, Inc.

Code	Soil Description	Acres	Percent of field	Non-Irr Class	Productivity Index	Alfalfa hay	Bromegrass-alfalfa	Corn	Flax	Grain sorghum	Oats	Spring wheat	Winter wheat
CdA	Cavo-Demky silt loams, 0 to 2 percent slopes	471.0	30.4%	IVs	57	1.2	2.0	0	0	21	30	15	0
JIA	Jerauld silt loam, 0 to 2 percent slopes	241.5	15.6%		21	0	0	0	0	0	0	0	0
Hn	Hoven silt loam	192.3	12.4%	VIs	10	0	0	0	0	0	0	0	0
Ma	Macken silty clay	160.2	10.3%	Vw	26	0	0	0	0	0	0	0	0
RaB	Raber-Cavo loams, 2 to 5 percent slopes	147.6	9.5%	IIIe	55	2.0	3.3	32	12	44	48	23	0
DkA	Demky-Cavo silt loams, 0 to 2 percent slopes	106.3	6.9%	IIIs	60	1.7	2.8	32	0	39	49	0	33
Ho	Hoven-Onita silt loams	60.8	3.9%	Vs	39	0	0	0	0	0	0	0	0
OdC	Oko-Jerauld complex, 2 to 9 percent slopes	60.8	3.9%	Ve	27	1.4	2.3	0	0	34	43	17	0
HgB	Highmore-DeGrey silt loams, 2 to 5 percent slopes	47.4	3.1%	Ile	72	2.0	3.3	40	0	48	56	22	30
HgA	Highmore-DeGrey silt loams, 0 to 2 percent slopes	36.9	2.4%	IIIc	73	2.1	3.5	42	0	50	60	24	32
Mar	Marsh	16.2	1.0%	VIIIw	6	0	0	0	0	0	0	0	0
ErB	Eakin-Raber silt loams, 2 to 5 percent slopes	10.8	0.7%	Ile	76	1.9	3.2	43	0	48	53	24	33
Weighted Average					41	0.9	1.4	8	1	18	22	9	4