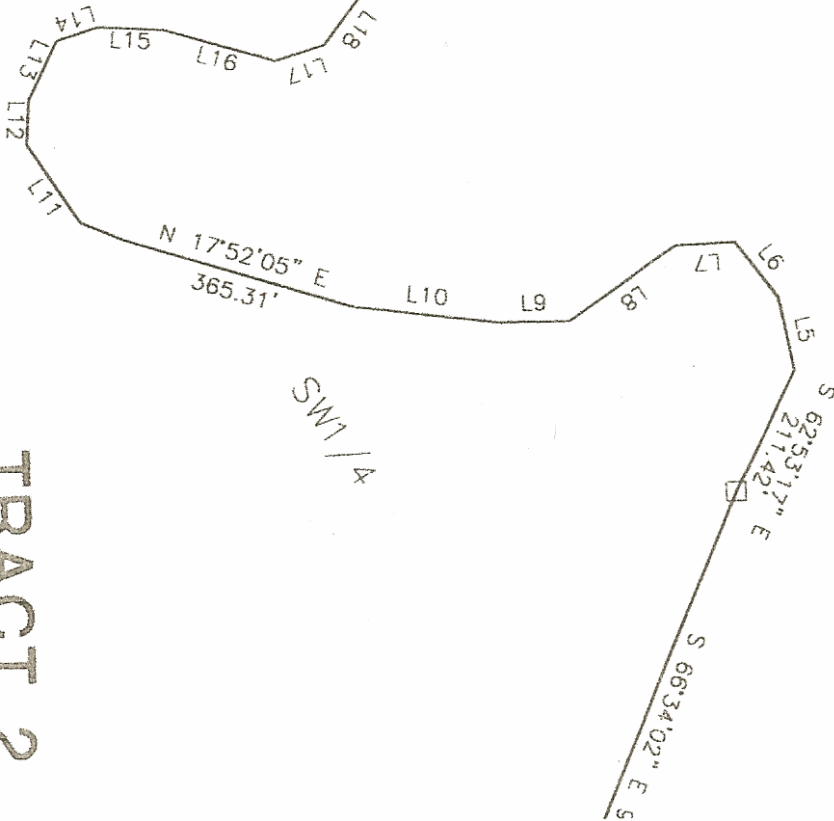


N 02°21'06" E

N 02°21'06" E

SECTION 29
SECTION 32

100 ft.
WITNESS
CORNER



TRACT 2
96.52 ACRES +

N 87°45'14" W

2640.84'

33 SECTION
33 SECTION

S 87°45'14" E

562.30'

SW 1/4

N 17°52'05" E
365.31'

S 62°53'17" E
211.42'

S 66°34'02" E S

1/4 LINE

N 00°49'17" E
334.37'

S 02°23'34" W
1322.21'

N 27°28'49" W
1134.43'

APPROVAL OF
STATE OF SOUTH
BE IT RESOLVED
APPROVE THE S
DAY OF

AUDITOR: