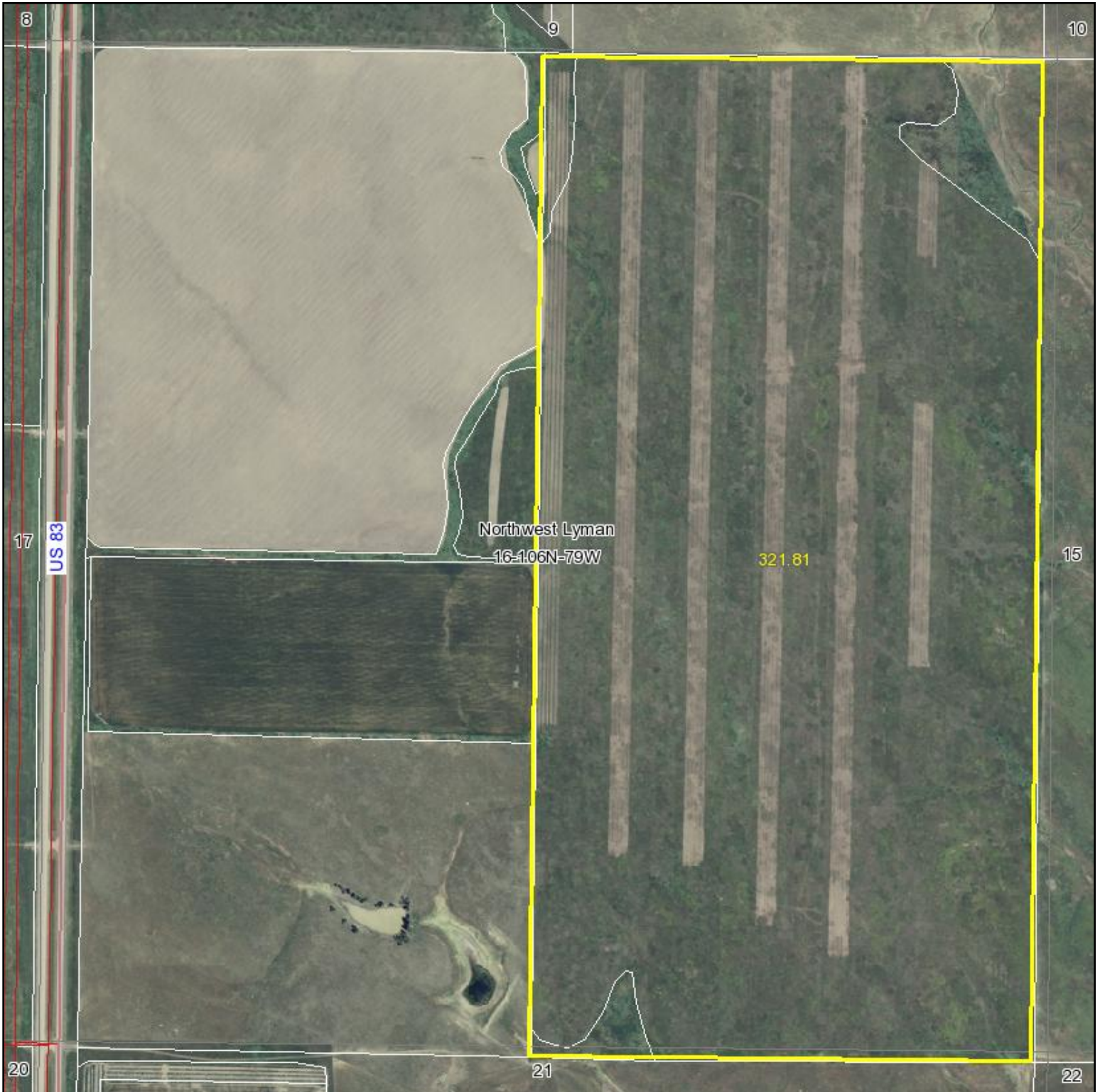


Aerial Map



Maps provided by:



©AgriData, Inc. 2009

www.AgriDataInc.com

16-106N-79W
Lyman County
South Dakota

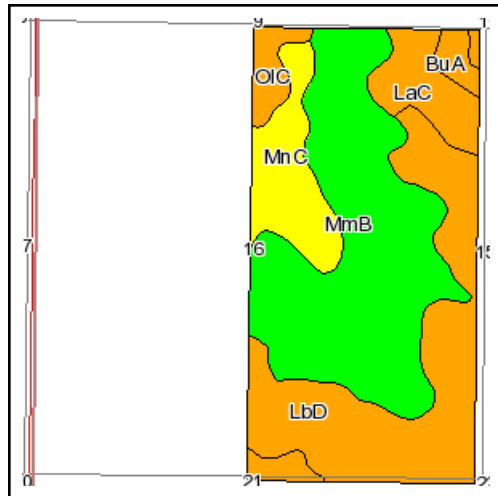
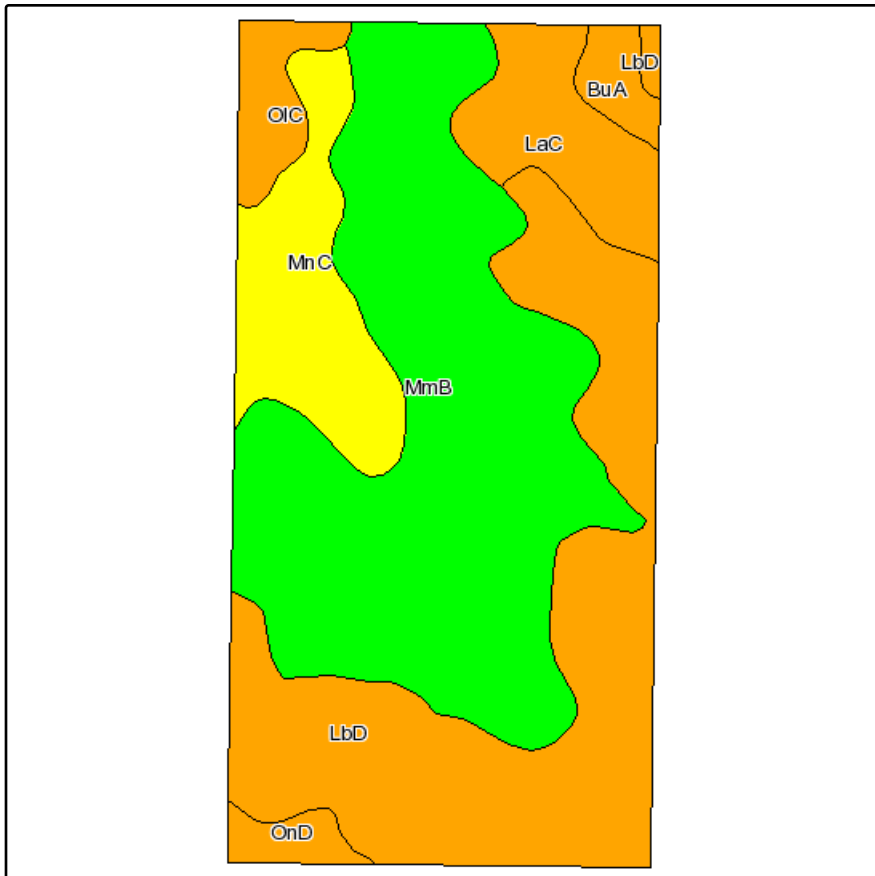
map center: 43° 59' 5.56, 100° 18' 58.27

scale: 10053

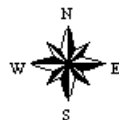


10/9/2009

Soils Map



State: **South Dakota**
 County: **Lyman**
 Location: **016-106N-079W**
 Township: **Northwest Lyman**
 Acres: **321.8**
 Date: **10/9/2009**



Maps provided by:



©AgriData, Inc 2008
www.AgriDataInc.com

Fsa borders provided by the Farm Service Agency as of May 23, 2008.
Soils data provided by USDA and NRCS.

Code	Soil Description	Acres	Percent of field	PI Legend	Non-Irr Class	Productivity Index	Alfalfa hay	Brome grass alfalfa	Corn	Grain sorghum	Oats	Spring wheat	Tall wheatgrass	Win whe
MmB	Millboro silty clay, 3 to 6 percent slopes	140.8	43.8%		IIIe	80	1.4		32	43	46			2.3
LbD	Lakoma-Okaton silty clays, 6 to 15 percent slopes	100.8	31.3%		VIe	29								
MnC	Millboro-Boro silty clays, 6 to 9 percent slopes	35	10.9%		IVe	53	1.3		27	36	39			2.2
LaC	Lakoma silty clay, 6 to 9 percent slopes	23.4	7.3%		IVe	47	0.9	1.5	16	24	27			
OIC	Opal clay, 6 to 9 percent slopes	10.4	3.2%		IVe	48	1.3		21	24	33	17		2.2
BuA	Bullcreek clay, 0 to 6 percent slopes	6	1.9%		VI s	11								
OnD	Opal-Sansarc clays, 6 to 15 percent slopes	5.4	1.7%		VIe	27								
Weighted Average						55.5	0.9	0.1	18.8	25.3	27.4	0.5		1.3

HOPE TWP.

T 106 N

R 79 W
JOINS STONY BUTTE TWP

