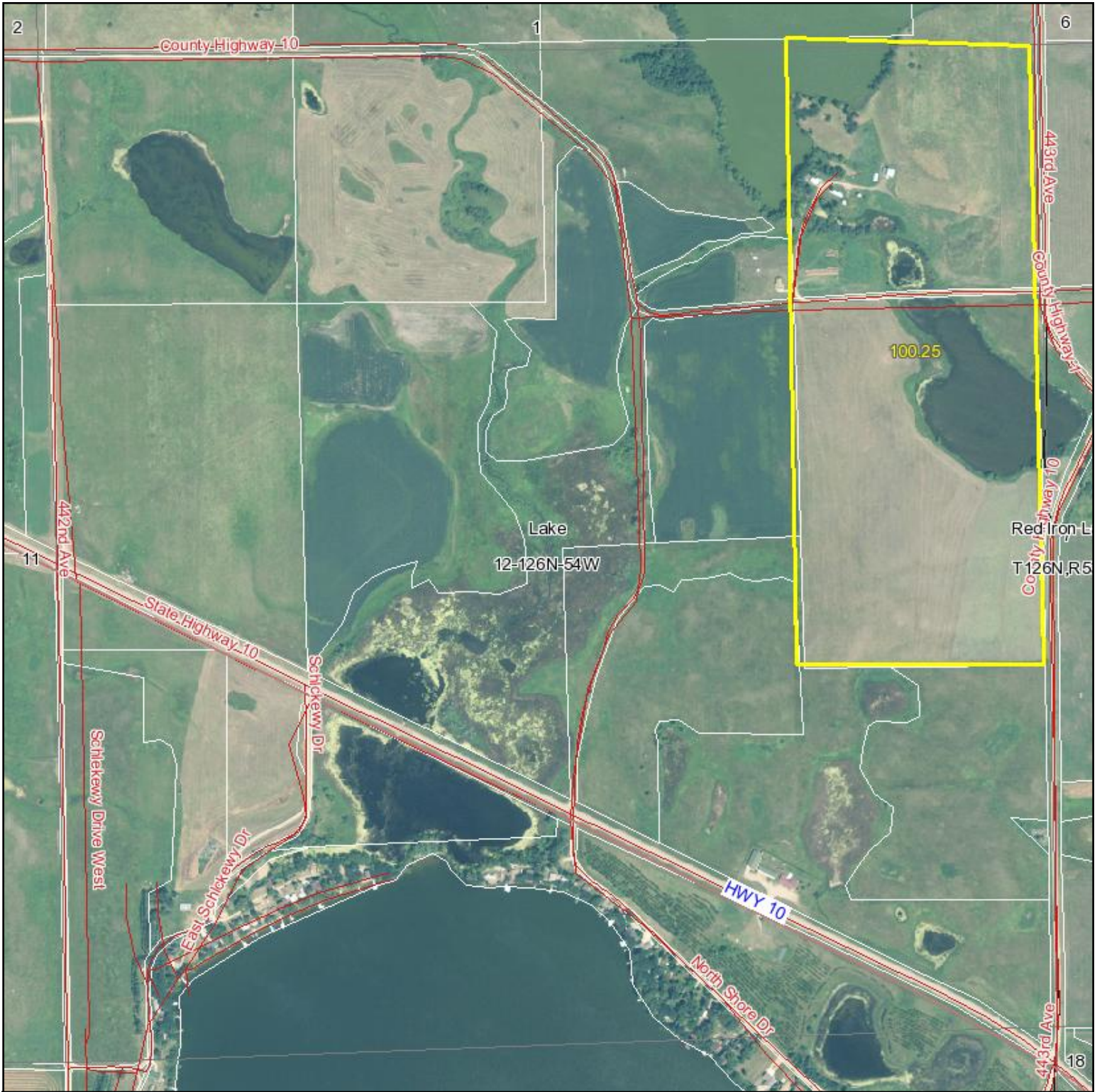


# Aerial Map



©AgriData, Inc. 2011  
www.AgriDataInc.com

**12-126N-54W**  
**Marshall County**  
**South Dakota**

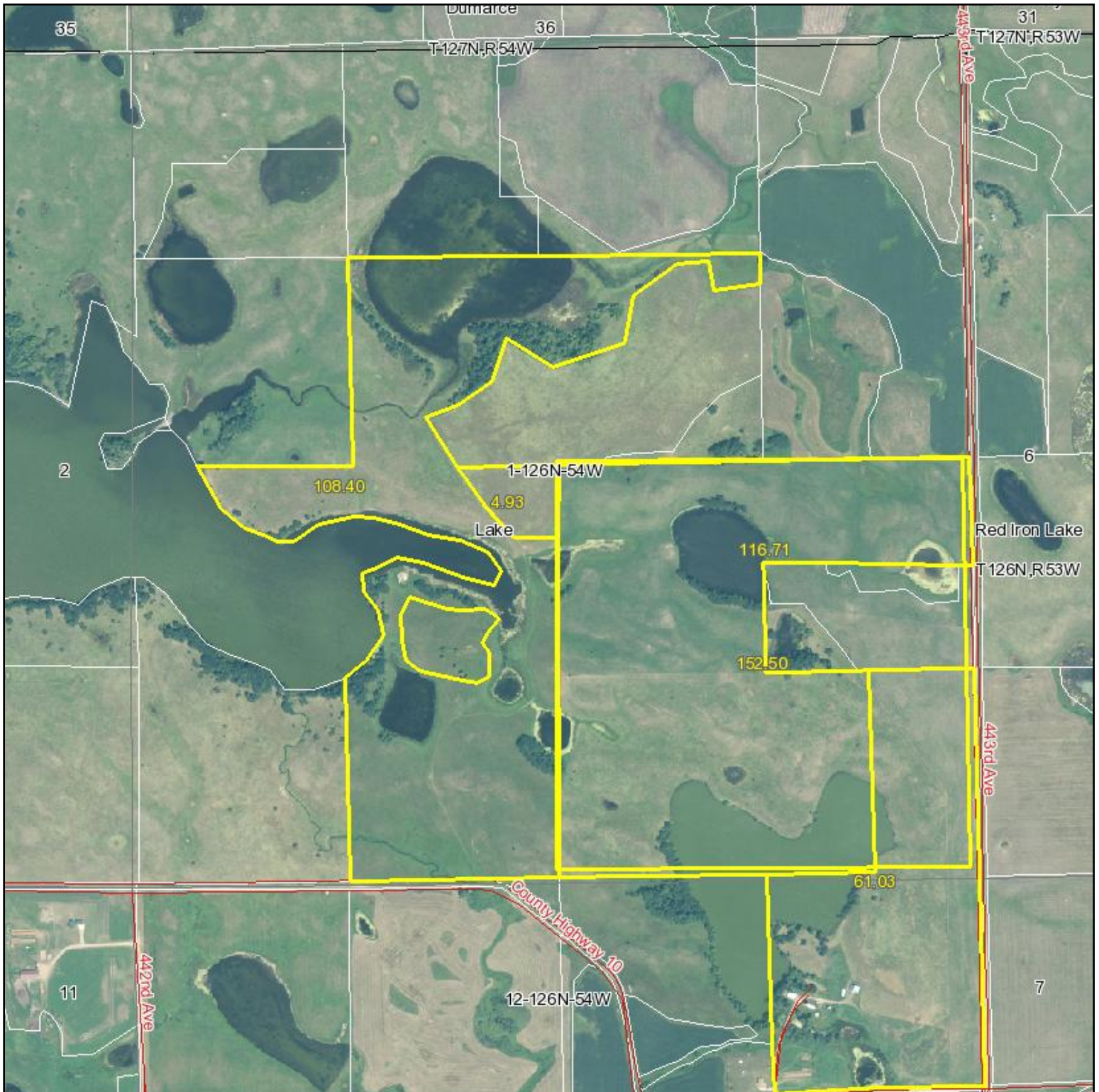
map center: 45° 42' 40.94, 97° 21' 41.08  
scale: 10147



11/21/2011

Field borders provided by Farm Service Agency as of 5/21/2008. Aerial photography provided by Aerial Photography Field Office.

# Aerial Map



Maps provided by:



©AgriData, Inc. 2011  
www.AgriDataInc.com

**1-126N-54W**  
**Marshall County**  
**South Dakota**

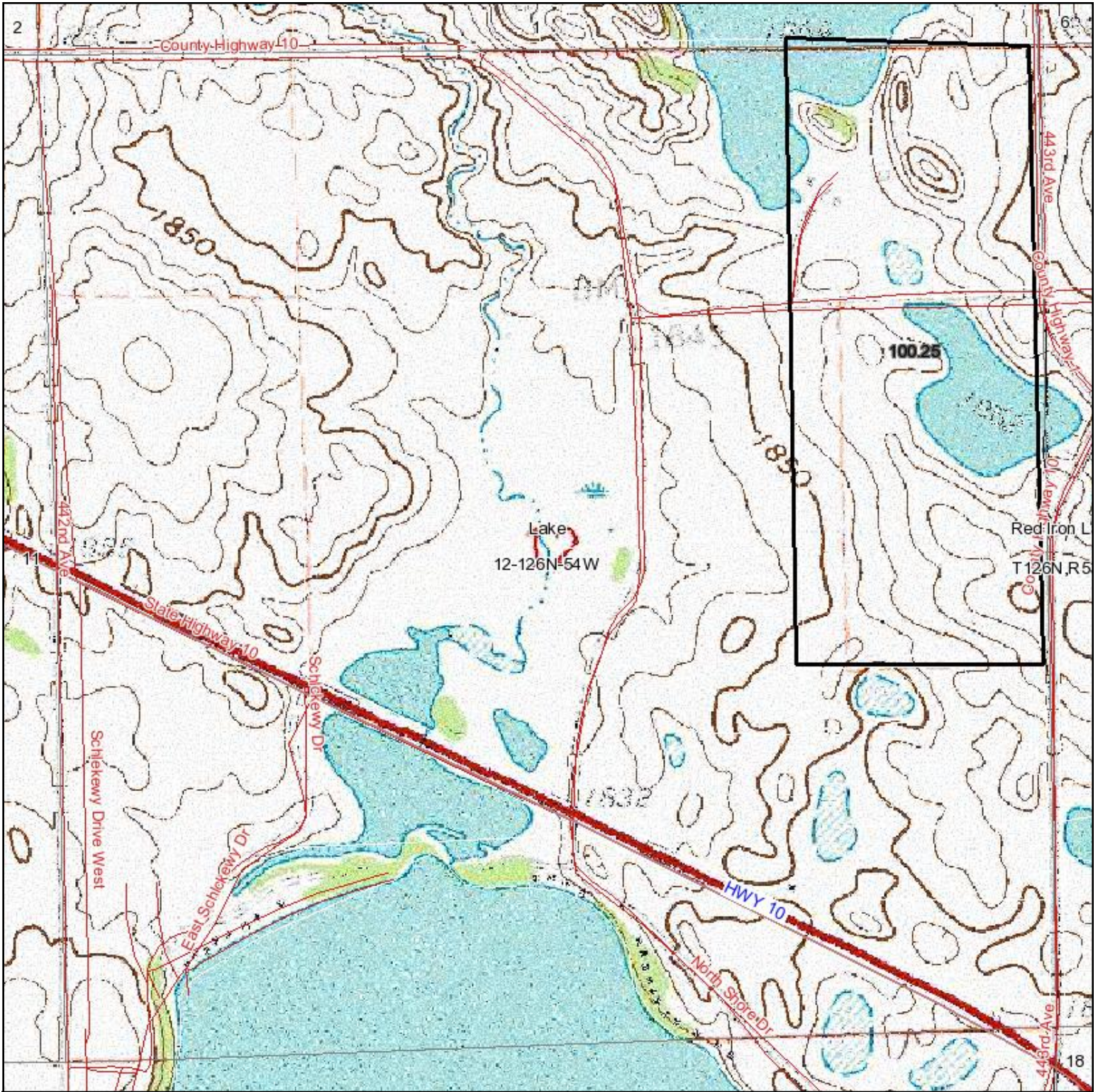
map center: 45° 43' 28.01, 97° 21' 41.24

scale: 11949



11/21/2011

# Topography Map



map center: 45° 42' 40.94, 97° 21' 41.08

scale: 10147

**12-126N-54W**  
**Marshall County**  
**South Dakota**



11/21/2011



Maps provided by:

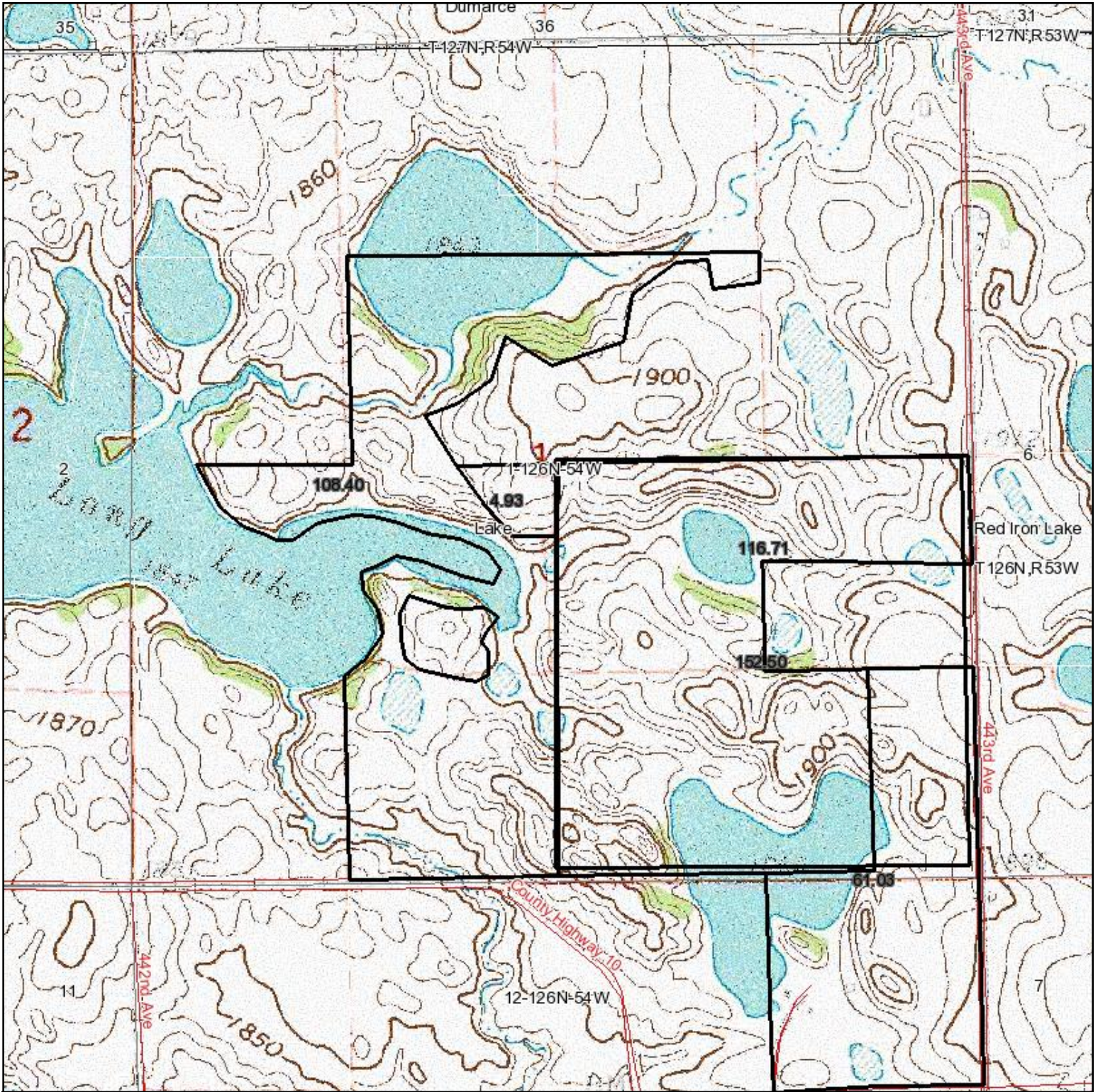


©AgriData, Inc. 2011

www.AgriDataInc.com

Field borders provided by Farm Service Agency as of 5/21/2008. Aerial photography provided by Aerial Photography Field Office.

# Topography Map



map center: 45° 43' 28.01, 97° 21' 41.24

scale: 11949

**1-126N-54W**  
**Marshall County**  
**South Dakota**



11/21/2011



Maps provided by:

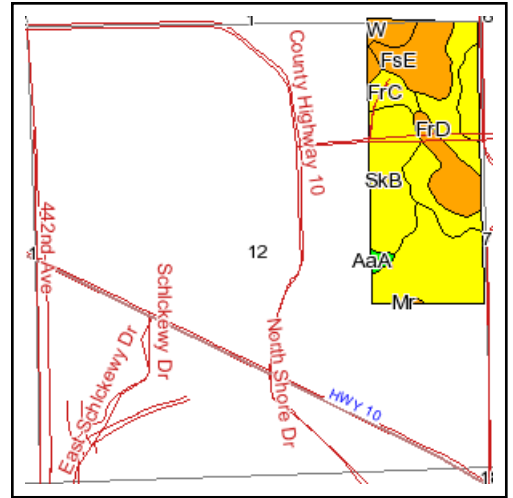
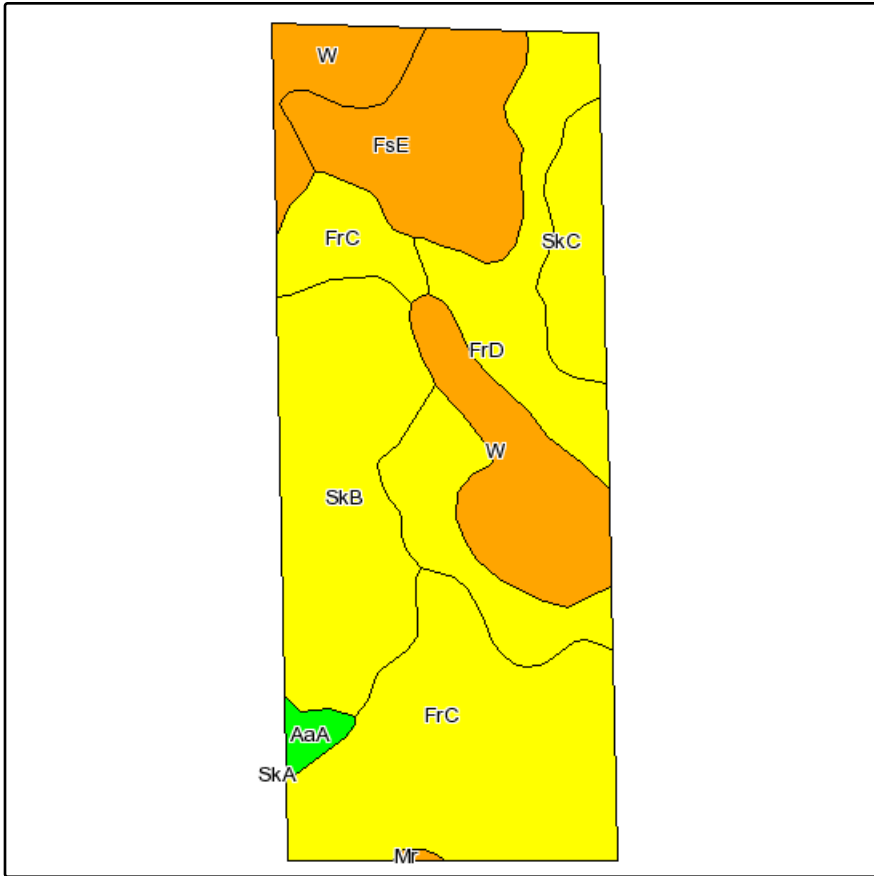


©AgriData, Inc. 2011

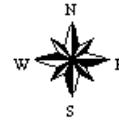
www.AgriDataInc.com

Field borders provided by Farm Service Agency as of 5/21/2008. Aerial photography provided by Aerial Photography Field Office.

# Soils Map



State: **South Dakota**  
 County: **Marshall**  
 Location: **012-126N-054W**  
 Township: **Lake**  
 Acres: **100.3**  
 Date: **11/21/2011**



Maps provided by:

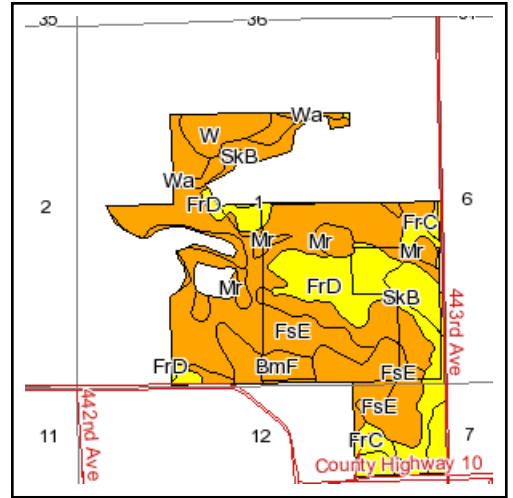
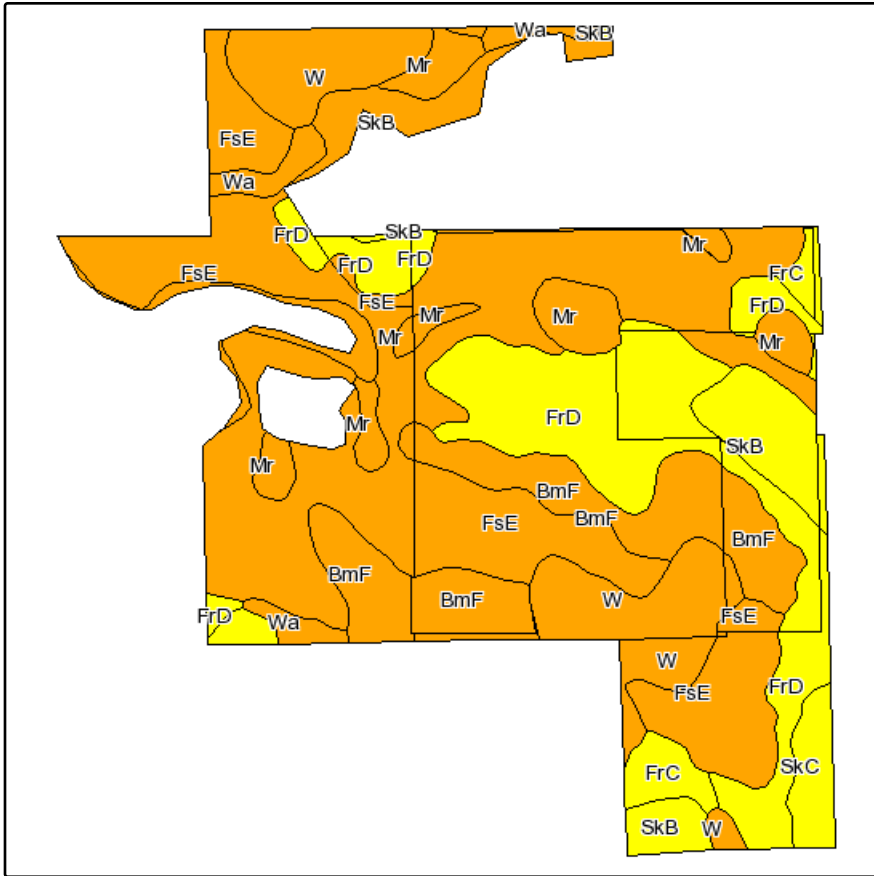


©AgriData, Inc 2008  
www.AgriDataInc.com

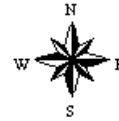
Fsa borders provided by the Farm Service Agency as of May 23, 2008.  
Soils data provided by USDA and NRCS.

Code	Soil Description	Acres	Percent of field	PI Legend	Non-Irr Class	Productivity Index	Alfalfa hay	Barley	Bromegrass hay	Bromegrass alfalfa	Corn	Corn silage	Grain sorghum	O
FrC	Forman-Aastad loams, 6 to 9 percent slopes	28.1	28.1%		IIIe	67	2.3	45	2	2.4	58	6.1	34	
SkB	Sinai silty clay, 3 to 6 percent slopes	19.4	19.3%		IIIe	73	2.3	46	2	2.3	60	6.3	35	
FrD	Forman-Aastad loams, 9 to 15 percent slopes	18.4	18.4%		IIIe	53	2.1	39	1.9	2.2	49	5.1	28	
W	Water	14.9	14.9%			0								
FsE	Forman-Buse loams, 15 to 25 percent slopes	12.8	12.7%		VIe	24	1.2	18	1.1	1.3	19	1.9	11	
SkC	Sinai silty clay, 6 to 9 percent slopes	5.3	5.3%		IIIe	59	2	40	1.8	2.1	49	5.1	28	
AaA	Aastad loam, 0 to 2 percent slopes	1.2	1.2%		I	92	3	57	2.5	3	78	8.2	46	
Mr	Southam silty clay loam	0.2	0.1%		VIIIw	5		1	0.1	0.1	4	0.4	3	
<b>Weighted Average</b>						<b>50</b>	<b>1.8</b>	<b>33.8</b>	<b>1.6</b>	<b>1.8</b>	<b>42.8</b>	<b>4.5</b>	<b>24.9</b>	

# Soils Map



State: **South Dakota**  
 County: **Marshall**  
 Location: **012-126N-054W**  
 Township: **Lake**  
 Acres: **443.6**  
 Date: **11/21/2011**



Maps provided by:



©AgriData, Inc 2008  
www.AgriDataInc.com

Fsa borders provided by the Farm Service Agency as of May 23, 2008.  
Soils data provided by USDA and NRCS.

Code	Soil Description	Acres	Percent of field	PI Legend	Non-Irr Class	Productivity Index	Alfalfa hay	Barley	Bromegrass hay	Bromegrass alfalfa	Corn	Corn silage	Grain sorghum	O
FsE	Forman-Buse loams, 15 to 25 percent slopes	178.7	40.3%		Vle	24	1.2	18	1.1	1.3	19	1.9	11	
FrD	Forman-Aastad loams, 9 to 15 percent slopes	85.5	19.3%		IIIe	53	2.1	39	1.9	2.2	49	5.1	28	
BmF	Buse-Forman stony complex, 9 to 40 percent slopes	64.5	14.5%		VIIIs	10	0.2	2	0.2	0.2	2	0.2	1	
W	Water	48.8	11.0%			0								
Mr	Southam silty clay loam	24.8	5.6%		VIIIw	5		1	0.1	0.1	4	0.4	3	
SkB	Sinai silty clay, 3 to 6 percent slopes	19.1	4.3%		IIIe	73	2.3	46	2	2.3	60	6.3	35	
FrC	Forman-Aastad loams, 6 to 9 percent slopes	9.8	2.2%		IIIe	67	2.3	45	2	2.4	58	6.1	34	
Wa	Rauville silty clay loam	6.6	1.5%		Vw	24		4	0.6	0.6	21	2.2	13	
SkC	Sinai silty clay, 6 to 9 percent slopes	5.8	1.3%		IIIe	59	2	40	1.8	2.1	49	5.1	28	
<b>Weighted Average</b>						<b>27.4</b>	<b>1.1</b>	<b>18.7</b>	<b>1</b>	<b>1.2</b>	<b>22.4</b>	<b>2.3</b>	<b>13</b>	