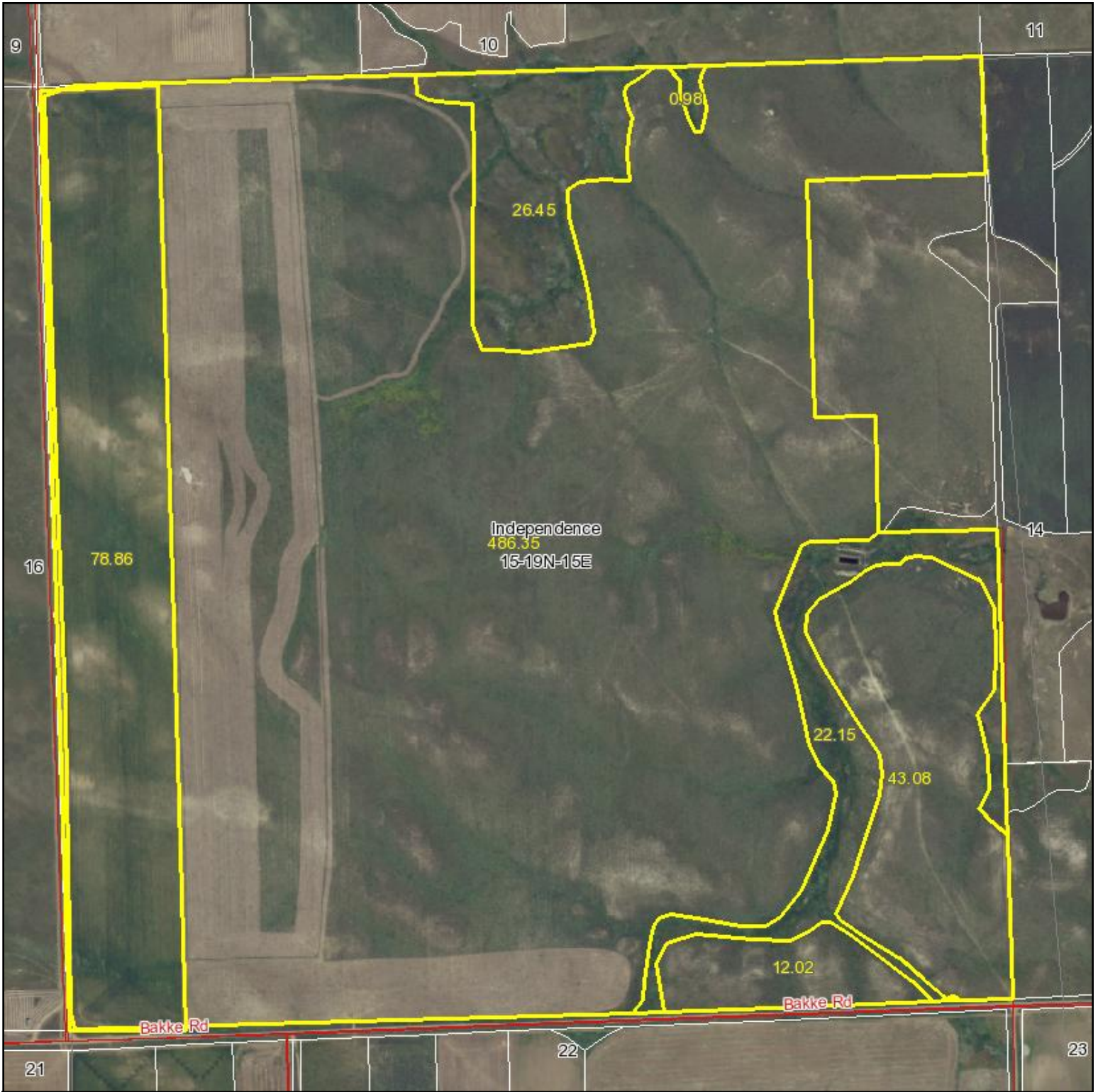


520 Acres



Aerial Map



Maps provided by:



©AgriData, Inc. 2010

www.AgriDataInc.com

15-19N-15E
Perkins County
South Dakota

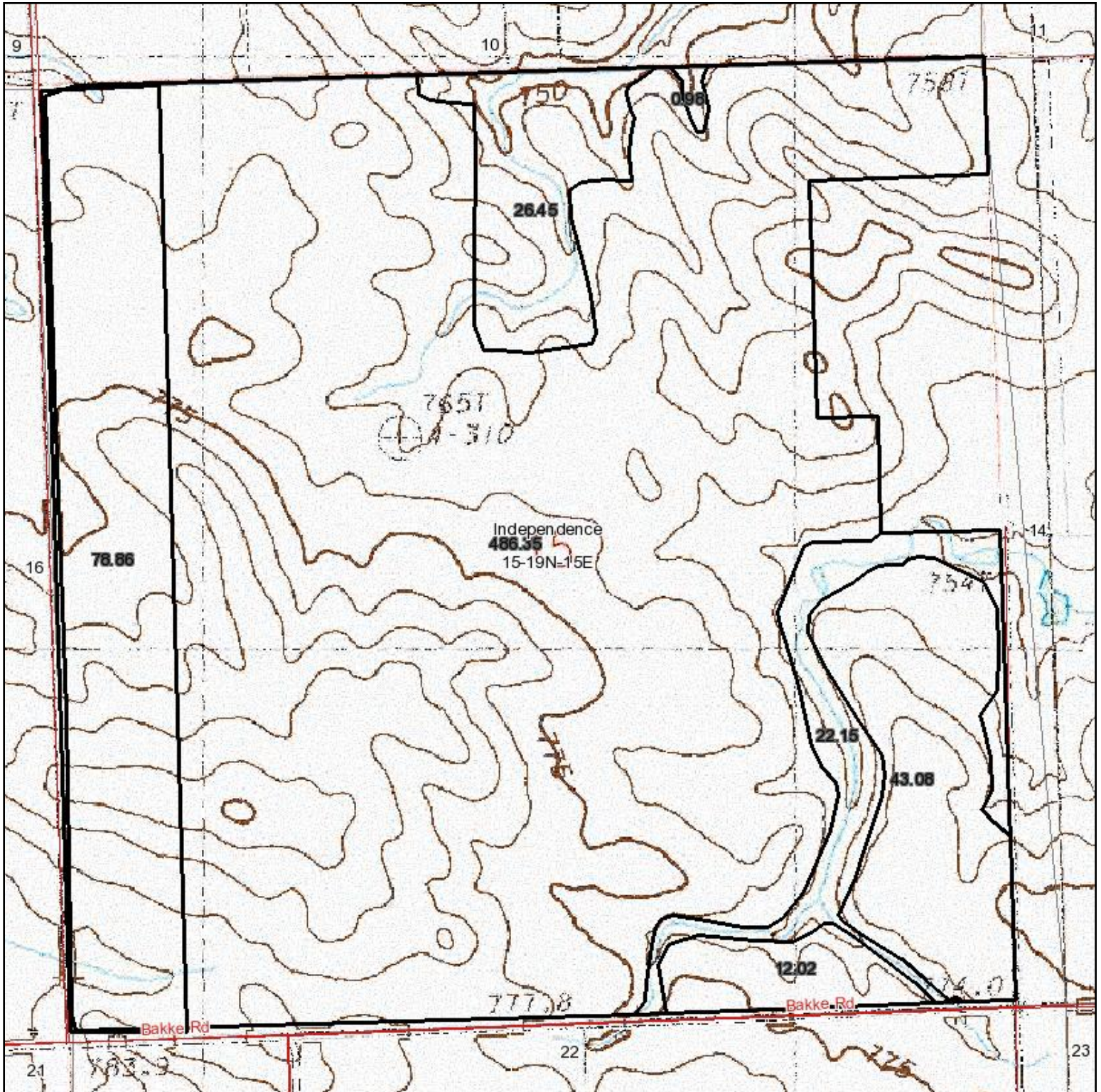
map center: 45° 36' 36.64, 102° 15' 40.68

scale: 10570



3/1/2010

Topography Map



Maps provided by:



©AgriData, Inc. 2010
www.AgriDataInc.com

15-19N-15E
Perkins County
South Dakota

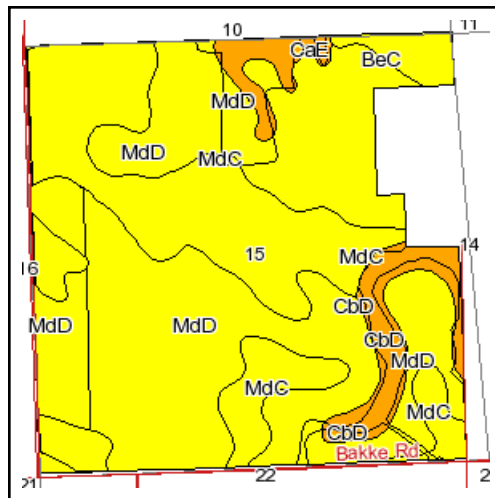
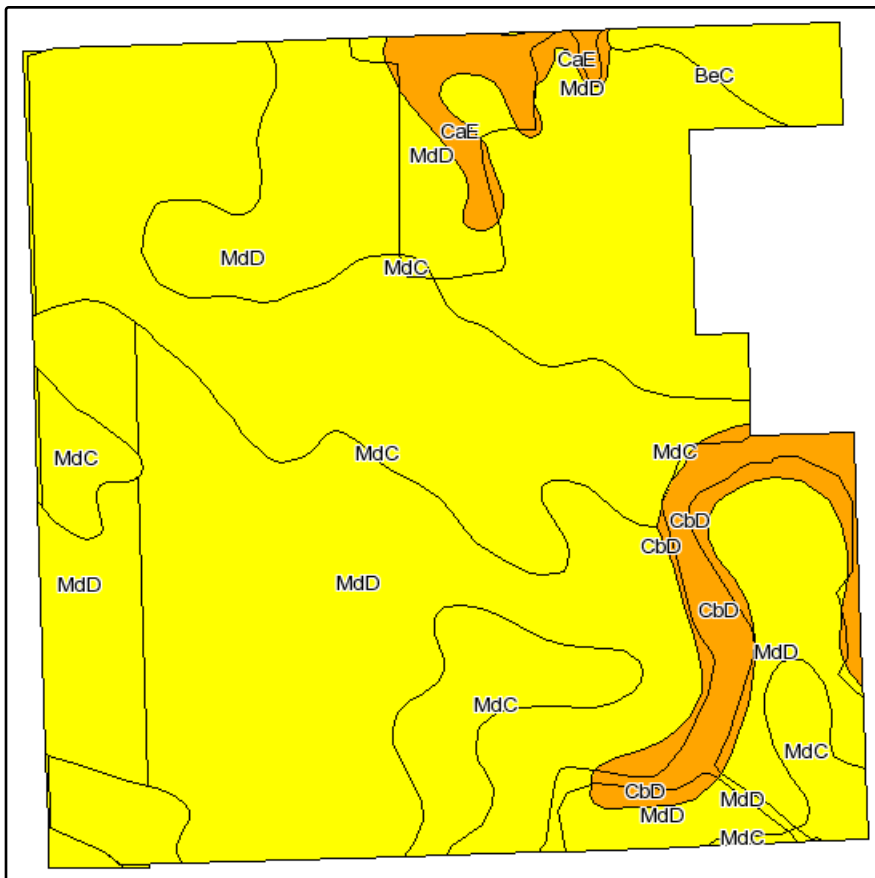
map center: 45° 36' 36.64, 102° 15' 40.68

scale: 10570

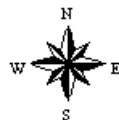


3/1/2010

Soils Map



State: **South Dakota**
 County: **Perkins**
 Location: **015-019N-015E**
 Township: **Independence**
 Acres: **669.9**
 Date: **3/1/2010**



Maps provided by:



©AgriData, Inc 2008
www.AgriDataInc.com

Fsa borders provided by the Farm Service Agency as of May 23, 2008.
Soils data provided by USDA and NRCS.

Code	Soil Description	Acres	Percent of field	PI Legend	Non-Irr Class	Productivity Index	Alfalfa hay	Cool season grasses	Corn	Oats	Spring wheat	Winter wheat
MdD	Morton-Lantry loams, 6 to 15 percent slopes	383.8	57.3%		IVe	52	1.2	2		30	16	20
MdC	Morton-Lantry loams, 2 to 9 percent slopes	225.4	33.6%		IIIe	72	1.6	2.7	26	45	24	27
CbD	Cabba-Trembles complex, 2 to 30 percent slopes	31.7	4.7%		VIw	14						
CaE	Cabba-Lantry loams, 15 to 40 percent slopes	15.6	2.3%		VIIe	12						
BeC	Belfield-Morton complex, 2 to 9 percent slopes	13.4	2.0%		IIIe	64	1.4	2.3		42	22	25
Weighted Average						56.2	1.3	2.1	8.7	33.2	17.7	21