



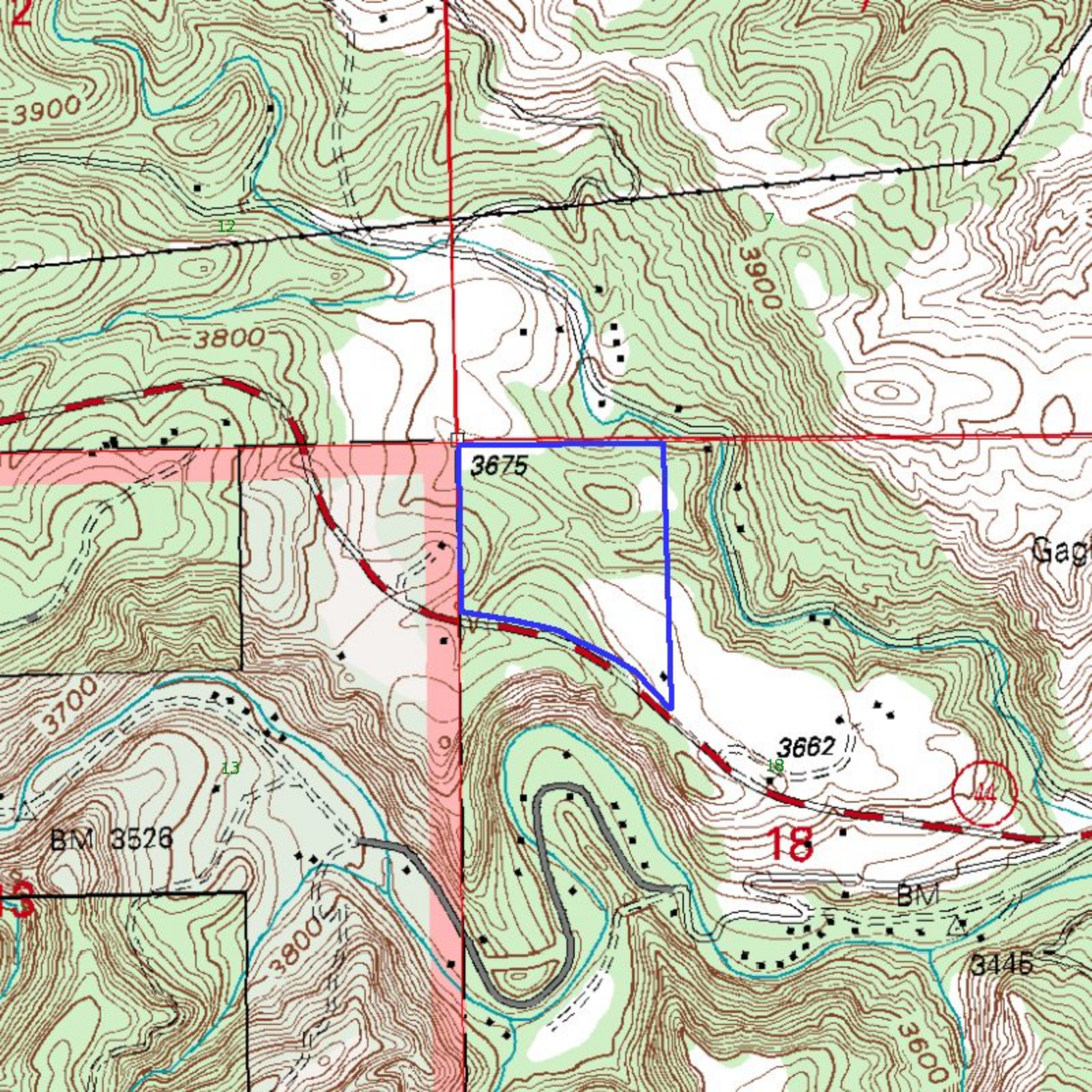
HWY 44 WEST

12

7

13

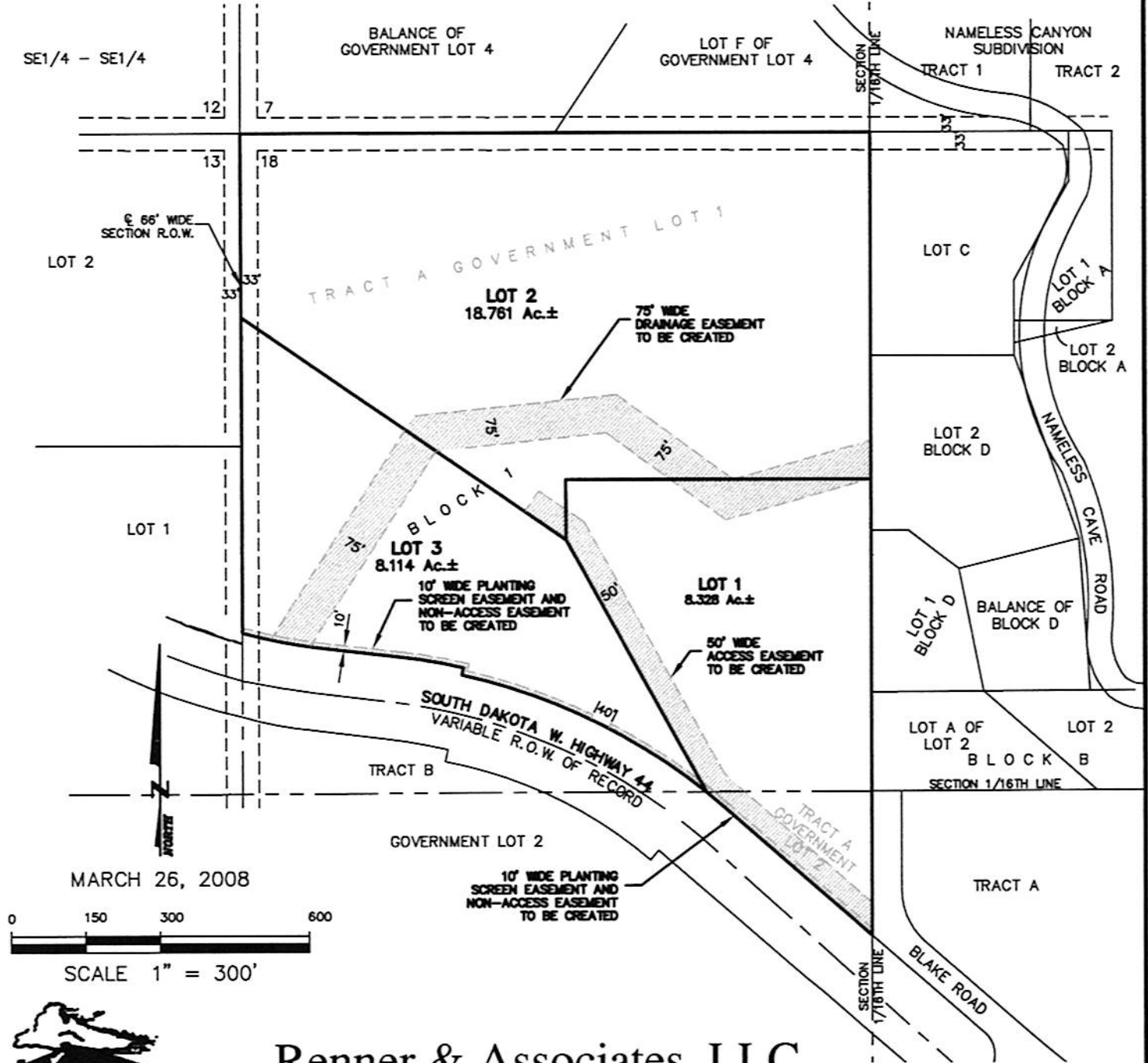
18



PLAT OF LOTS 1-3 OF BLOCK 1, BLAKE ESTATES SUBDIVISION

(formerly Tract A of Government Lot 1 &
Tract A of Government Lot 2)

LOCATED IN THE W1/2 OF THE NW1/4
SECTION 18, T1N, R7E, BHM
PENNINGTON COUNTY, SOUTH DAKOTA



MARCH 26, 2008

0 150 300 600

SCALE 1" = 300'



CITY HALL 1903

Renner & Associates, LLC.

616 Sixth St. * Rapid City, SD 57701 * 605/721-7310

FAX: 605/721-7313 * E-MAIL: Gary@RennerAssoc.com