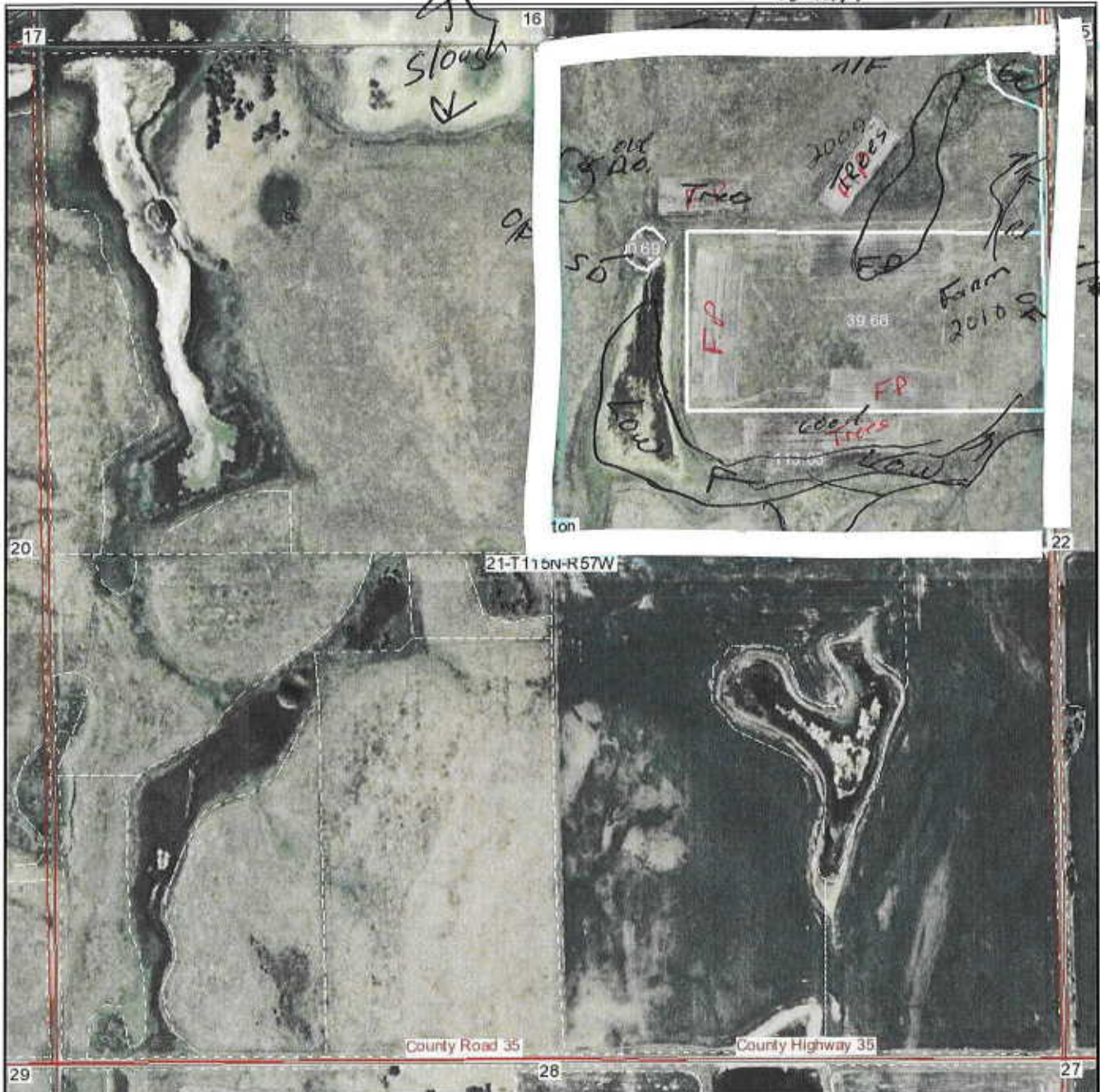


Smith 21

Aerial Map

Wheat



21-T115N-R57W

County Road 35

County Highway 35

map center: 44° 45' 14.08, 97° 41' 6.85  
scale: 1:9831

Map provided by:  
**surety**  
CERTIFIED ONLINE MAPPING  
© AgriData, Inc. 2006

**21-115N-57W**  
**Clark County**  
**South Dakota**

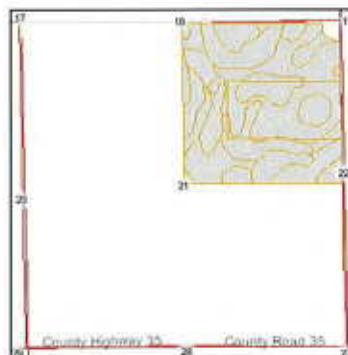
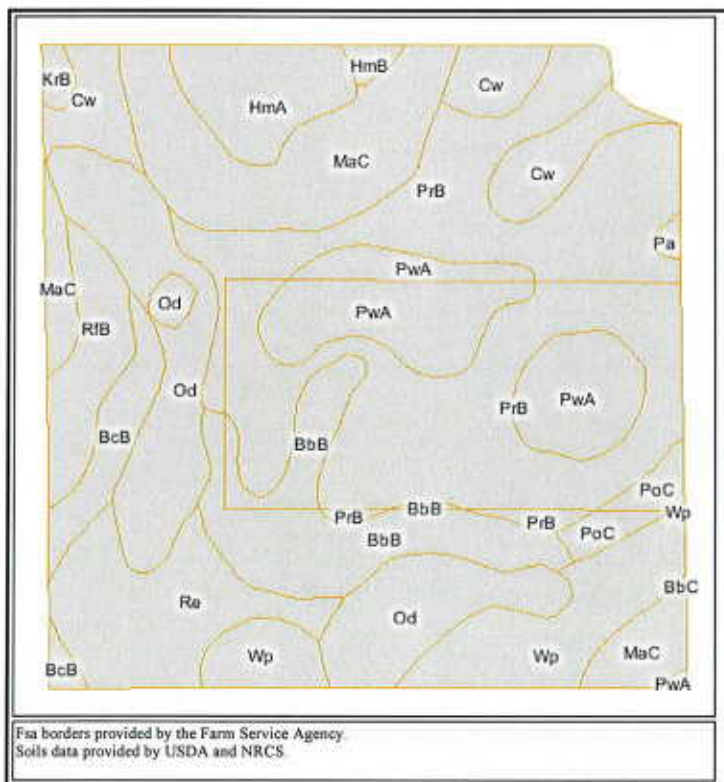


3/27/2008

Field borders provided by Farm Service Agency. Aerial photography provided by Aerial Photography Field Office.

153 e CAP  
7,991<sup>sq</sup> ft.

### Soils Map



State: **SD**  
 County: **Clark**  
 Location: **21-115N-57W**  
 Township: **Merton**  
 Acres: **153.4**



Code	Soil Description	Acres	Percent of field	Non-Irr Class	Productivity Index	Alfalfa hay	Barley	Bromegrass hay	Bromegrass-alfalfa	Corn	Corn silage	Grain sorghum	Oats	Soybeans	Spring wheat	Sunflowers	Winter wheat
PrB	Poinsett-Rusklyn-Waubay silty clay loams, 1 to 6 percent slopes	43.2	28.2%	Ile	83	3.0	54	2.6	3.1	75	7.8	44	67	29	37	1350	40
Od	Oldham silty clay loam	18.4	12.0%	Vw	31	0	6	0.4	0.4	26	2.7	16	6	9	4	460	1
MaC	Maddock-Egeland sandy loams, 6 to 9 percent slopes	17.3	11.3%	IVe	31	2.0	32	1.7	2.0	34	3.5	22	37	14	21	670	23
PwA	Poinsett-Waubay silty clay loams, 0 to 2 percent slopes	14.2	9.3%	I	94	3.3	60	2.8	3.4	86	8.9	50	75	34	41	1540	45
BbB	Barnes-Buse loams, 2 to 6 percent slopes	12.0	7.8%	Ile	75	2.6	47	2.3	2.7	64	6.6	37	58	24	32	1140	35
Wp	Wyndmere-Parnell complex	10.8	7.0%	IIIs	60	1.5	32	1.9	1.9	54	5.6	32	39	19	21	980	22
Re	Rauville silty clay loam	10.2	6.6%	Vw	29	0	4	0.7	0.7	22	2.3	13	5	7	3	400	1
Cw	Cubden-Tonka silty clay loams	8.5	5.5%	IIIs	75	1.7	35	2.2	2.2	65	6.7	38	43	23	24	1160	24
	Helland																

HmA	silty clay loam, 0 to 2 percent slopes	5.8	3.8%	I	89	2.9	56	2.5	3.0	78	8.1	46	69	31	38	1410	41
RfB	Renshaw-Fordville loams, 2 to 6 percent slopes	5.0	3.3%	III <sub>s</sub>	44	1.7	30	1.5	1.8	29	3.0	18	35	12	20	560	22
BcB	Barnes-Buse-Svea loams, 1 to 6 percent slopes	4.2	2.7%	II <sub>e</sub>	74	2.8	50	2.4	2.8	68	7.0	40	61	26	34	1220	37
PoC	Poinsett-Rusklyn silty clay loams, 6 to 9 percent slopes	2.2	1.4%	III <sub>e</sub>	68	2.5	44	2.2	2.6	58	6.0	34	54	22	30	1050	33
KrB	Kranzburg-Buse-Waubay complex, 1 to 6 percent slopes	0.7	0.5%	II <sub>e</sub>	83	3.0	53	2.5	3.0	74	7.6	43	65	28	36	1320	39
HmB	Hetland silty clay loam, 2 to 6 percent slopes	0.6	0.4%	II <sub>e</sub>	84	2.8	52	2.5	2.9	71	7.4	42	64	28	35	1280	39
Pa	Parnell silty clay loam	0.3	0.2%	V <sub>w</sub>	31	0.0	6	0.4	0.4	26	2.7	16	7	10	4	460	1
<b>Weighted Average</b>					<b>64</b>	<b>2.1</b>	<b>39</b>	<b>2.0</b>	<b>2.3</b>	<b>57</b>	<b>5.9</b>	<b>34</b>	<b>47</b>	<b>22</b>	<b>26</b>	<b>1,035</b>	<b>28</b>

COOPERATOR Horning, LLC

SMITH-21

YEAR 2003

1/18/2008

2003 SMITH 21 REPLANT

CP4D & rp-tree.XLSSheet44

COUNTY Clark

ACRES 7.6

CP23

Revised 3-9-03

LOCATION SEC 21 T 115 R 57

TRACT 10790

SITE #	SPACING	ROW #	SPECIES	FROM NORTH OR WEST	SPACING IN ROW	APPROX FEET	LENGTH RODS	# OF PLANTS	PRICE EACH	AMT BILLED
Replant 50%		1	RED DOGWOOD		4.00	270.00	16.36	68.00	3.40	55.64
		2	PLUM		4.00	0.00	0.00	0.00	3.40	0.00
Replant 100%		3	CEDAR		8.00	540.00	32.73	68.00	3.15	103.09
Replant 100%		4	CEDAR		8.00	540.00	32.73	68.00	3.15	103.09
		5	LILAC		4.00	0.00	0.00	0.00	3.40	0.00
		6	PLUM		4.00	0.00	0.00	0.00	3.40	0.00
		7	CEDAR		8.00	0.00	0.00	0.00	3.15	0.00
		8	CEDAR		8.00	0.00	0.00	0.00	3.15	0.00
		9	PLUM		4.00	0.00	0.00	0.00	3.40	0.00
		10	CEDAR		8.00	0.00	0.00	0.00	3.15	0.00
		11	CEDAR		8.00	0.00	0.00	0.00	3.15	0.00
Replant 50%		12	PLUM		4.00	270.00	16.36	68.00	3.40	55.64
		13	RED DOGWOOD		4.00	0.00	0.00	0.00	3.40	0.00
2	14	14	1	RED DOGWOOD	4.00	0.00	0.00	0.00	3.40	0.00
			2	RED DOGWOOD	4.00	0.00	0.00	0.00	3.40	0.00
			3	PLUM	4.00	0.00	0.00	0.00	3.40	0.00
Replant 100%			4	ELDERBERRY	4.00	450.00	27.27	113.00	3.40	92.73
Replant 100%			5	ELDERBERRY	4.00	450.00	27.27	113.00	3.40	92.73
			6	PLUM	4.00	0.00	0.00	0.00	3.40	0.00
			7	CEDAR	8.00	0.00	0.00	0.00	3.15	0.00
			8	CEDAR	8.00	0.00	0.00	0.00	3.15	0.00
			9	PLUM	4.00	0.00	0.00	0.00	3.40	0.00
			10	CEDAR	8.00	0.00	0.00	0.00	3.15	0.00
			11	CEDAR	8.00	0.00	0.00	0.00	3.15	0.00
			12	CEDAR	8.00	0.00	0.00	0.00	3.15	0.00
			13	RED DOGWOOD	4.00	0.00	0.00	0.00	3.40	0.00
3	14	14	1	RED DOGWOOD	4.00	0.00	0.00	0.00	3.40	0.00
			2	PLUM	4.00	0.00	0.00	0.00	3.40	0.00
Replant 75%			3	CEDAR	8.00	525.00	31.82	66.00	3.15	100.23
Replant 75%			4	CEDAR	8.00	525.00	31.82	66.00	3.15	100.23
Replant 100%			5	PLUM	4.00	700.00	42.42	175.00	3.40	144.24
			6	PLUM	4.00	0.00	0.00	0.00	3.40	0.00
Replant 100%			7	HAWTHORN,HSTD	4.00	700.00	42.42	175.00	3.40	144.24
Replant 100%			8	HAWTHORN,HSTD	4.00	700.00	42.42	175.00	3.40	144.24
			9	PLUM	4.00	0.00	0.00	0.00	3.40	0.00
			10	CEDAR	8.00	0.00	0.00	0.00	3.15	0.00
			11	CEDAR	8.00	0.00	0.00	0.00	3.15	0.00
Replant 100%			12	PLUM	4.00	700.00	42.42	175.00	3.40	144.24
Replant 50%			13	RED DOGWOOD	4.00	350.00	21.21	88.00	3.40	72.12

ORIGINAL TREES PLANTED > 201