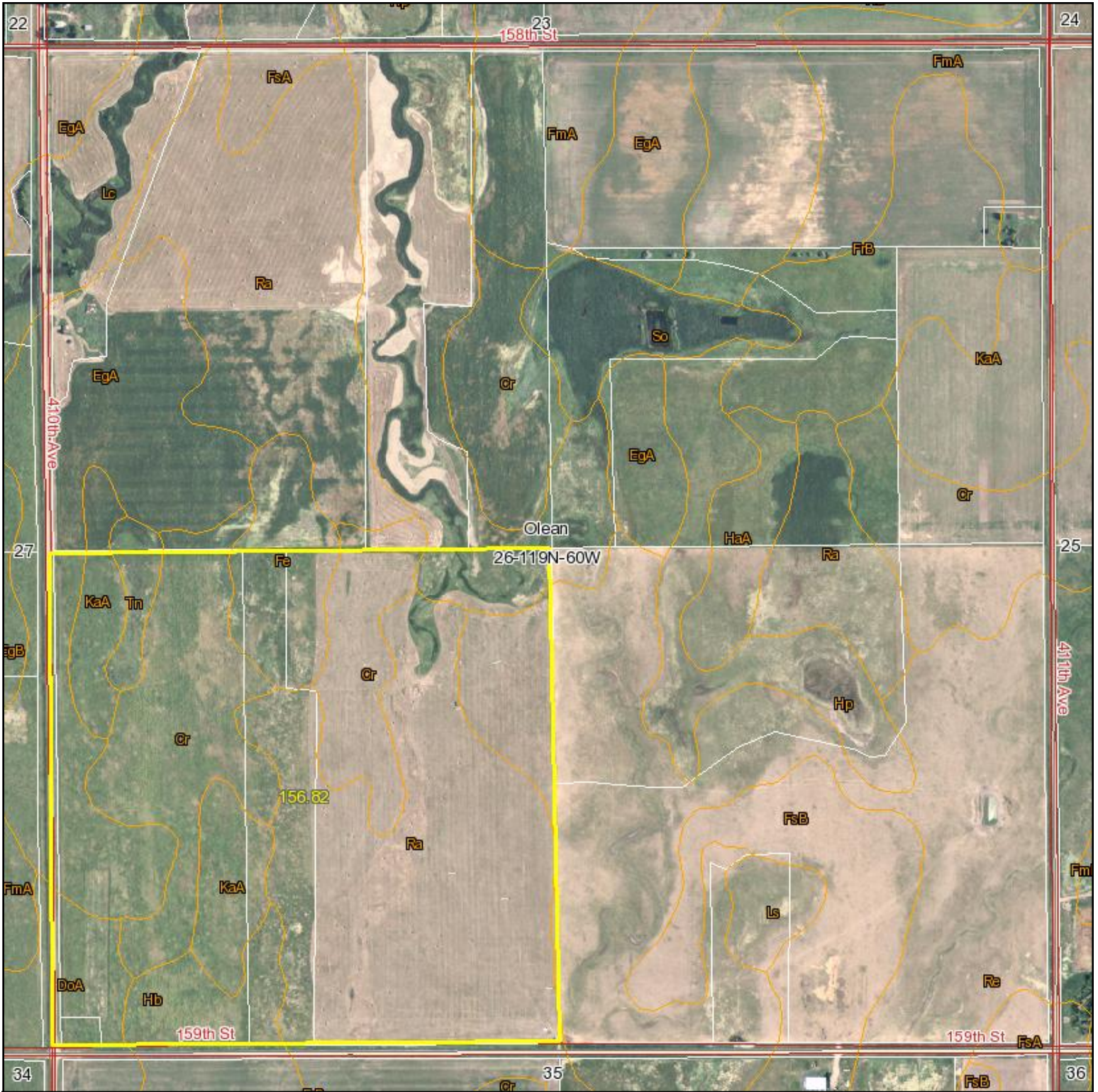


# Aerial Map



26-119N-60W

156.62

map center: 45° 5' 17.61, 98° 0' 45.66

scale: 9956

**26-119N-60W**  
**Spink County**  
**South Dakota**



10/22/2009



Maps provided by:

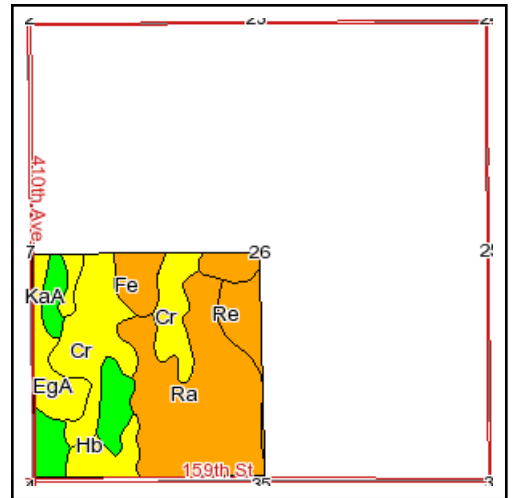
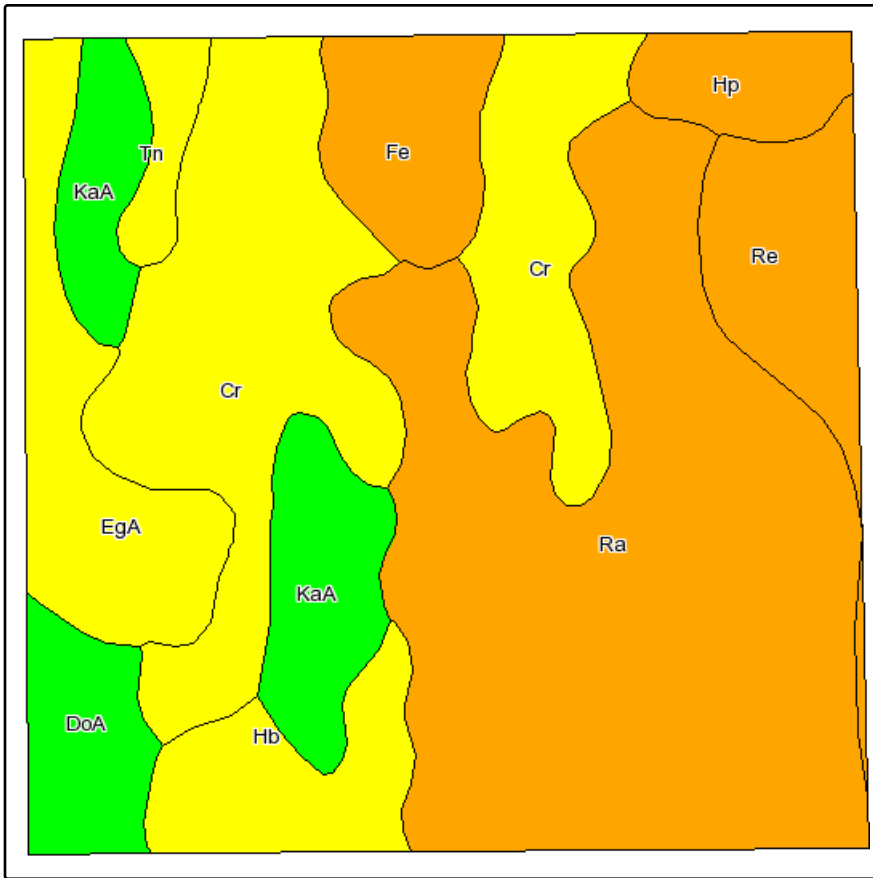


©AgriData, Inc. 2009

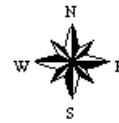
www.AgriDataInc.com

Field borders provided by Farm Service Agency as of 5/23/2008. Aerial photography provided by Aerial Photography Field Office.

# Soils Map



State: **South Dakota**  
 County: **Spink**  
 Location: **026-119N-060W**  
 Township: **Olean**  
 Acres: **156.8**  
 Date: **10/22/2009**



Maps provided by:



©AgriData, Inc 2008  
www.AgriDataInc.com

Fsa borders provided by the Farm Service Agency as of May 23, 2008.  
Soils data provided by USDA and NRCS.

Code	Soil Description	Acres	Percent of field	PI Legend	Non-Irr Class	Productivity Index	Alfalfa hay	Brome grass alfalfa	Corn	Soybeans	Spring wheat	Sunflowers
Ra	Ranslo silty clay loam, 0 to 1 percent slopes	57.7	36.9%		IVs	31	1.1	1.3	34	15	11	700
Cr	Cresbard-Cavour loams, 0 to 2 percent slopes	35.7	22.8%		III s	54	2.4	2.6	68	23	30	1100
KaA	Kranzburg-Brookings silt loams, 0 to 2 percent slopes	12.3	7.8%		II c	93	3.9	4.1	114	41	48	1900
EgA	Egeland-Embden complex, 0 to 2 percent slopes	12.1	7.7%		III e	62	2.8	3	74	26	32	1250
Re	Ranslo-Harriet loams, 0 to 2 percent slopes	9.4	6.0%		Vs	24	0.5	0.6	23	8	7	350
Hb	Hamerly-Tonka complex, 0 to 2 percent slopes	8.2	5.2%		III w	67	1.6	1.8	80	24	24	1250
Fe	Ferney-Heil complex, 0 to 2 percent slopes	7.7	4.9%		VI s	13	0.3	0.3	11	3	5	120
DoA	Doland-Embden complex, 0 to 3 percent slopes	6.2	3.9%		II e	79	3.3	3.5	96	34	40	1550
Hp	Harriet loam, 0 to 1 percent slopes	4.8	3.0%		VI s	7			6	1	1	60
Tn	Tonka silt loam, 0 to 1 percent slopes	2.7	1.7%		IV w	58	0.3	0.4	69	24	15	1200
<b>Weighted Average</b>						<b>45.6</b>	<b>1.7</b>	<b>1.9</b>	<b>53.8</b>	<b>19.6</b>	<b>20.9</b>	<b>928.1</b>