

“MEADE COUNTY 80 ACRES”
ABSOLUTE LAND AUCTION

**LOCATED DUE NORTH OF STURGIS, SD, 3.5 MI. WEST OF HWY 79
& JUST EAST OF WHITEWOOD CREEK W/BLACK HILLS VIEWS**

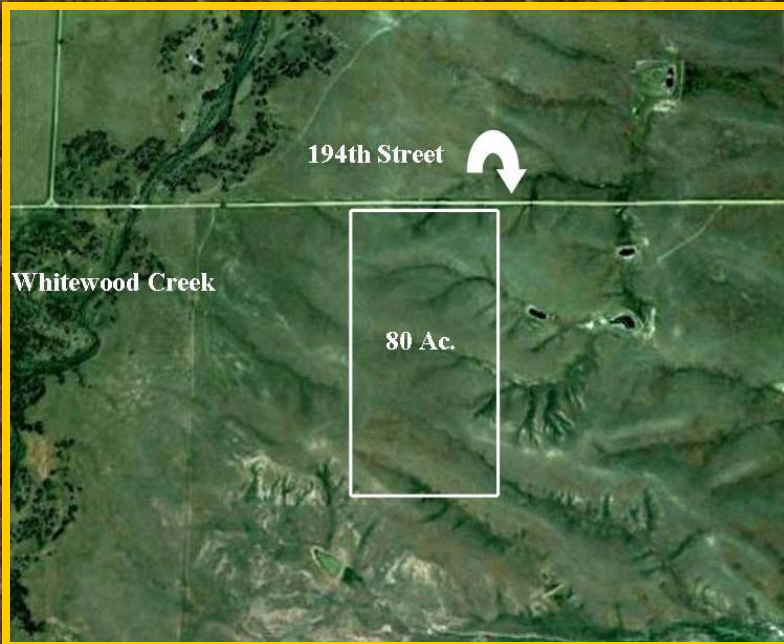
THURS, SEPT. 9, 2010 - 2:00 PM

PROPERTY LOCATION – At Sturgis, SD, approx. 13 mi. north of the Jct. of Highways 34/79, then 3-3/4 mi. west on 194th St. OR 6 mi. south of the Jct. of Highways 212/79, then 3-3/4 mi. west on 194th St. Signs will be posted.

AUCTION LOCATION – Holiday Inn Express, Sturgis, SD.

Looking for that affordable, easily accessed and well-grassed pasture unit for your home, horses, out-of-town getaway or adding to your existing operation? Look no further. This choice Meade County acreage boasts all of these attributes with the addition of gentle terrain and panoramic views of the Black Hills, Bear Butte and with Whitewood Creek just one-quarter mile away. Offered in (2) 40 acre parcels and as a single 80 acre tract, selling in the manner realizing the greater return. Property selling with no minimum, no reserve day of auction.

PROPERTY INSPECTION –Please feel free to inspect at your leisure, approx. prop-erty corners are marked with blue/white ribbons and signage. For further infor-mation, please call for com-plete informational brochure, with photos, maps, terms, etc.. Broker represents Seller’s interests. Broker participation invited.



**OWNERS
TALMADGE &
HEATHER
SEAMAN
Bowie, MD**



Participating with

Cabela's TROPHY PROPERTIES®

www.CabelasTrophyProperties.com