

Sargent County, ND Land Auction

640+/- Contiguous Grassland Acres - Offered in 4 Tracts and 1 Unit
Located on SD/ND border near Britton, SD

Tuesday, April 8th, 2008 at 2:00 pm CST SHARP!
Auction held at Community Center in Britton, SD

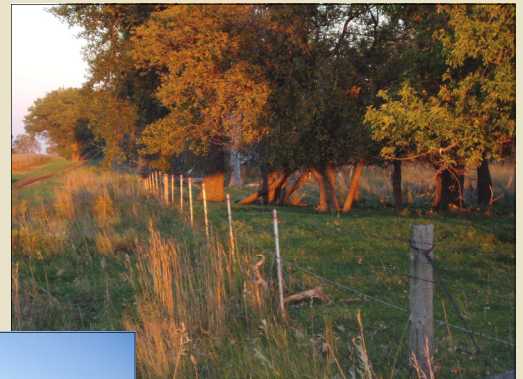
This property is nestled in along the border of North Dakota and South Dakota. The entire property rests in North Dakota, with the southern border resting on the state line. The section is cross fenced to allow for easy rotational grazing and is under a perpetual grassland easement. The property is a rare complete section located one half mile off of a well traveled roadway making it very accessible. The property also contains a artesian well and other natural water sources which ease with rotational grazing. The cattails and trees provide shade and cover for livestock and habitat for wildlife such as waterfowl, deer, and pheasants. This is an unique property that lends itself to a variety of uses.

Take advantage of the opportunity to own it.
Located 7 miles west, 11 miles north, 1/2 mile west of Britton, SD.

Legal Description: W1/2 of 35-129-58 and E1/2 of 34-129-58, Sargent County, ND.

Owners: David & Connie Finley

Call for a complete Property Information Packet, or download from website.



Broker Participation Invited.

Dakota Properties will be acting as agents of the seller with the duty to represent the seller's interest.

Auction Professionally Conducted By:

Lucas Lentsch
Broker Associate/Auctioneer
605-237-8942

Josh Kraft
Broker Associate/Auctioneer
605-448-8376

Participating with

Dakota 
PROPERTIES
REAL ESTATE
www.DakotaProperties.com

Participating with
Cabela's TROPHY
PROPERTIES™
www.CabelasTrophyProperties.com